



Henry® Air-Bloc® All Weather STPE™

UV Resistant, Vapor Permeable Air Barrier

Spray on faster. Stay on schedule.

Vapor permeable and UV-resistant **Henry® Air-Bloc® All Weather STPE™** is a single-component, moisture cure Silyl Terminated Polyether (STPE) water-resistive air barrier membrane. Featuring a high solids content and quick cure time, **Air-Bloc All Weather STPE** can be applied with rain in the forecast, helping to reduce job-site weather delays. Its hydrophobic characteristics mean that it won't wash off in the rain or freeze. Plus, it can be spray-, roller- or brush-applied.

Air-Bloc All Weather STPE is compatible with Henry air barrier flashings and sealants and can also be used as flashing when it is also the primary air barrier membrane. For more than 30 years, innovative Henry air barrier solutions like Air-Bloc All Weather STPE have been helping the industry build with confidence.

Features and Benefits



High solids, fast curing, hydrophobic formulation won't shrink while curing or wash off in the rain; can be applied at temperatures as low as 10°F (-12°C)



Can be left exposed for up to 12 months during construction, allowing for scheduling flexibility



Permanent UV exposure behind open-joint cladding offers added design flexibility



Sprayable, one-coat application and high coverage rate for faster installation



Single-component, vapor permeable membrane allows walls to breathe and dry



Can be used as a liquid flashing when Air-Bloc All Weather STPE is the primary membrane, resulting in quicker air barrier system installation*

Henry Air-Bloc All Weather STPE Air Barrier System



Air-Bloc All Weather STPE can be spray-, roller-, or brush-applied for fast, one-coat coverage. Additionally, Air-Bloc All Weather STPE can be used as a liquid flashing when it is the primary membrane, resulting in quicker and simpler air barrier system installation. Air-Bloc All Weather STPE can also be combined with other Henry flashings, sealants and accessories, and offers excellent rain wash-off resistance and long-term UV stability.

Recommended system components

Air barrier

- 1 Air-Bloc All Weather STPE

Flashing options

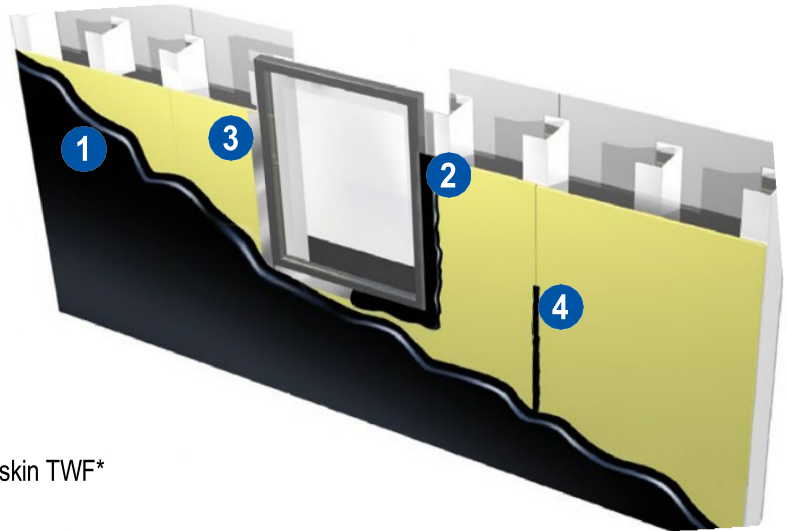
- 2 Air-Bloc All Weather STPE or Air-Bloc LF
- 3 Blueskin Metal Clad/ LT*

Sealant and joint treatment

- 4 Henry 925 BES Sealant or Air Bloc LF

Other compatible flashings include:

- Blueskin SA/SA LT*, Blueskin Butyl Flash, Blueskin TWF*



Key attributes of Air-Bloc All Weather STPE

Single-component, one-coat, monolithic application	✓	Nail sealability	✓
Permanent UV exposure under open joint cladding	✓	NFPA 285: meets 2021 IBC 1403.5 exception #2	✓
Excellent wash-off resistance; rain ready within 30 minutes	✓	Declare label, no red list chemicals	✓
Can be applied down to 10 °F (-12 °C)	✓	Vapor permeable	✓
Can be applied to damp substrate	✓	Passes AAMA 714-19	✓

See product Technical Data Sheet for specific physical properties.

Coverage rates and film thickness by substrate

Substrate	Wet/dry film thickness (mils)	Coverage rate (ft ² /gallon)	Coverage rate (m ² /gallon)
Smooth surfaces (gypsum, sheathing and OSB)	20/20 [†]	60 - 75	5.5 - 7.0
Rough surfaces (CMU and concrete)	20/20 [†]	40 - 60	3.75 - 5.5

[†] Typical

*Asphalt flashings must be applied to the substrate, not over Air-Bloc All Weather STPE. See Installation Manual and Technical Data Sheet for details.

Henry, Air-Bloc, Blueskin, Metal Clad, Building Envelope Systems and Building Confidence are registered trademarks of the Henry Company.



Building Envelope Systems®
Roofing | Air Barrier | Waterproofing

Ask us today about other Henry® solutions that help manage the flow of water, air,