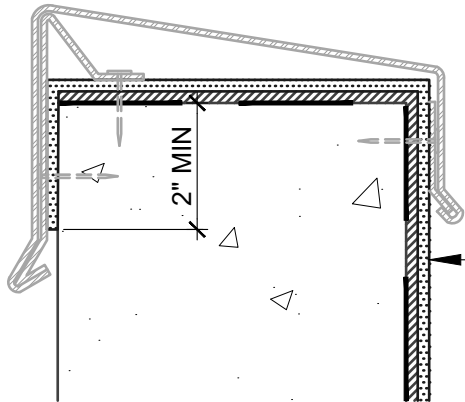


PROTECT **MODIFIEDPLUS G100S/S**  
FROM INDEFINITE UV EXPOSURE

**HENRY 790-11/790-11EV** 2-PLY 215 MIL  
REINFORCED WITH **POLYESTER FABRIC** AND  
**MODIFIEDPLUS G100S/S** PROTECTION COURSE

**HOT RUBBERIZED ASPHALT**

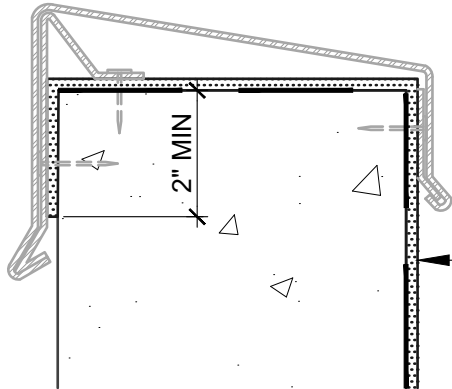
N.T.S



**NEOFASH, HENRY 990-25** OR **MODIFIEDPLUS NP180gM4**  
SET IN **HENRY 790-11** (125 MILS)  
(REFER TO PRODUCT SPECIFIC DATA SHEET FOR UV  
EXPOSURE LIMITATIONS)

**MOP-GRADE FLASHING**

N.T.S



**MODIFIEDPLUS NP180gT4**

**TORCH GRADE FLASHING**

N.T.S

**NOTES:**

1. DETAIL SHOWS HENRY VEGETATIVE ROOFING WITH **HENRY 790-11/790-11EV** WATERPROOFING/ROOFING ASSEMBLY. SUBSTRATE SHOWN IS FOR REFERENCE ONLY. REFER TO PRODUCT SPECIFIC TECHNICAL DATA SHEET FOR AUTHORIZED SUBSTRATES.
2. EMBED **MODIFIEDPLUS** FLASHING GRANULES AT ANTICIPATED OVERLAP PRIOR TO SUBSEQUENT INSTALLATIONS.
3. CONFIRM COMPATIBILITY OF HENRY PRODUCTS WHEN AN AIR BARRIER IS INSTALLED ON EXTERIOR SIDE OF WALL.
4. REFER TO VEGETATIVE ROOFING GUIDE SPECIFICATION FOR RECOMMENDED INSTALLATION PROCEDURES.



999 N. Pacific Coast Hwy, Suite 800  
El Segundo, CA 90245  
800-486-1278 • www.henry.com

MANUFACTURER GUIDE DETAILS ARE FOR REFERENCE ONLY. HENRY DOES NOT ASSUME RESPONSIBILITY FOR ERRORS OR DEVIATIONS IN DESIGN OR ENGINEERING. PROJECT SPECIFIC VERIFICATION IS RECOMMENDED PRIOR TO INSTALLATION.

**VEGETATIVE ROOFING - HENRY 790-11/790-11EV**

**TERMINATION OPTIONS**

**790-11 TERMINATION OPTIONS  
ON A VERTICAL SUBSTRATE**

SCALE: N.T.S.

06-01-2020

**VR-790-11-6B**