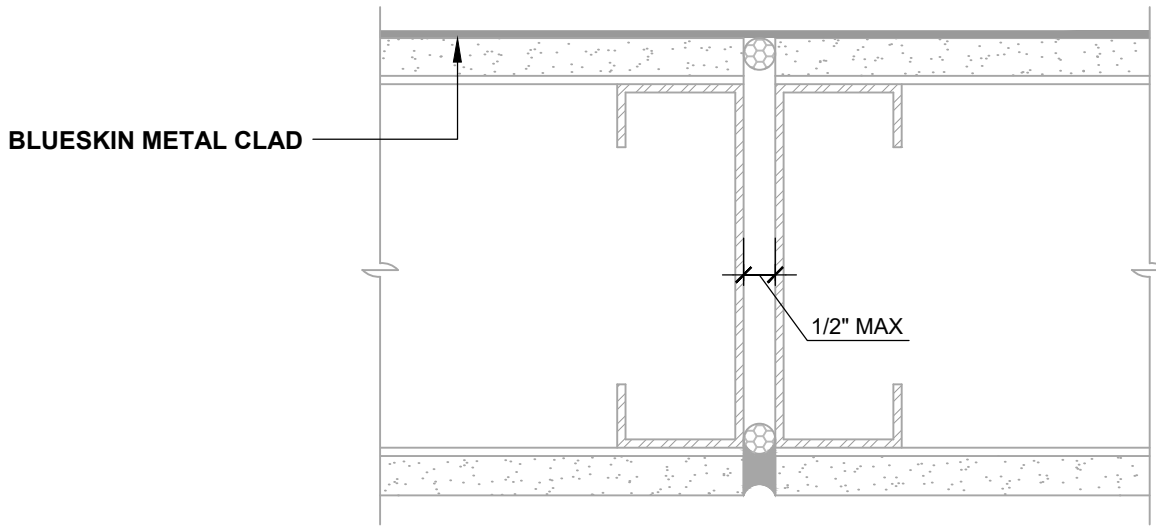


CMU MORTAR JOINTS (PLAN VIEW)

STRIKE MORTAR FULL AND FLUSH



GAPS UP TO 1/2" MAX (PLAN VIEW)

FLASHING INSTALLED BEFORE WRB

NOTES:

1. DETAIL SHOWS **BLUESKIN METAL CLAD SELF-ADHERED WATER RESISTIVE AIR BARRIER**. SUBSTRATE SHOWN IS FOR REFERENCE ONLY. ACCEPTABLE SUBSTRATES INCLUDE PLYWOOD, OSB, CONCRETE, CMU, METAL, AND EXTERIOR GRADE SHEATHING.
2. FILL GROUT AND STRIKE CMU JOINTS FULL AND FLUSH TO CREATE A CONTINUOUS SUBSTRATE. REFER TO PRODUCT SPECIFIC TECHNICAL DATA SHEET FOR CURE TIME PRIOR TO AIR BARRIER INSTALLATION.
3. SELF-ADHERED MEMBRANE PRIMER NOT SHOWN FOR CLARITY.
4. INSTALL **BLUESKIN METAL CLAD** TO ACHIEVE A CONTINUOUS WATER-RESISTIVE BARRIER (WRB). INSULATION AND CLADDING NOT SHOWN FOR CLARITY.
5. REFER TO PRODUCT SPECIFIC TECHNICAL DATA SHEET (TDS) AND **BLUESKIN METAL CLAD** GUIDE SPECIFICATION FOR INSTALLATION PROCEDURES.



999 N. Pacific Coast Highway, Suite 800
 El Segundo, CA 90245
 800-486-1278 • www.henry.com

MANUFACTURER GUIDE DETAILS ARE FOR REFERENCE ONLY. HENRY DOES NOT ASSUME RESPONSIBILITY FOR ERRORS OR DEVIATIONS IN DESIGN OR ENGINEERING. PROJECT SPECIFIC VERIFICATION IS RECOMMENDED PRIOR TO INSTALLATION.

BLUESKIN METAL CLAD SELF-ADHERED AIR BARRIER

NON-MOVING JOINTS

**CMU MORTAR JOINTS AND
 SUBSTRATE GAPS UP TO 1/2" WIDE MAXIMUM**

SCALE: N.T.S.

01-09-2020

MTLCLD-8A