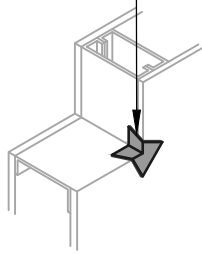


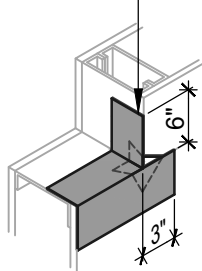
OPTION #1

GUSSET

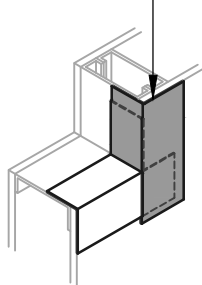
BLUESKIN METAL CLAD



BLUESKIN METAL CLAD



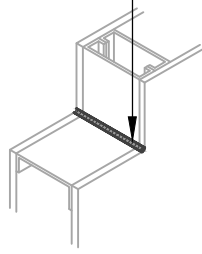
BLUESKIN METAL CLAD



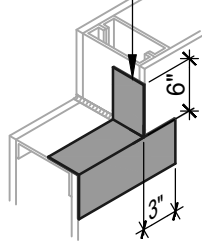
OPTION #2

SEALANT

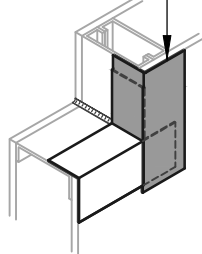
HENRY 925 BES SEALANT OR AIR-BLOC LF



BLUESKIN METAL CLAD OR AIR-BLOC LF



BLUESKIN METAL CLAD OR AIR-BLOC LF



WINDOW SILL/JAMB FLASHING

SEALANT AND GUSSET METHODS

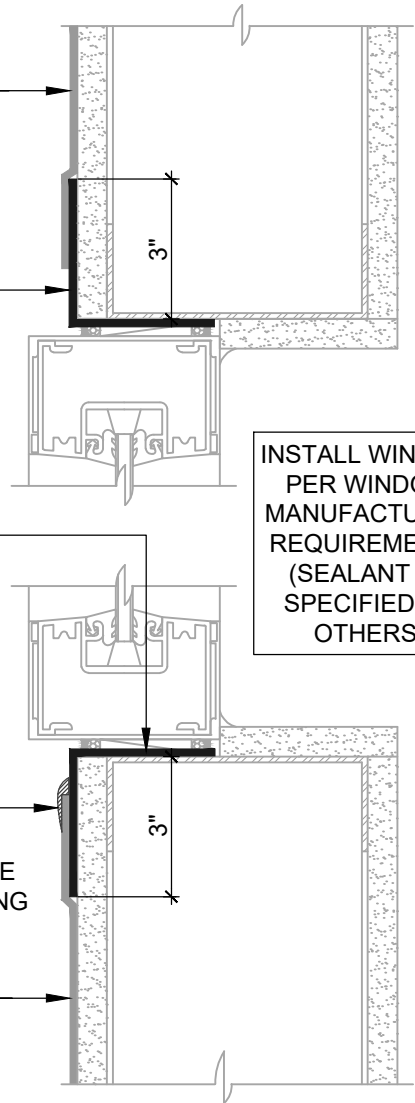
BLUESKIN METAL CLAD
LAP AIR BARRIER 2" ONTO FLASHING

BLUESKIN METAL CLAD OR AIR-BLOC LF
EXTEND FLASHING 3" (SUGGESTED) INTO ROUGH OPENING (2" MIN)

BLUESKIN METAL CLAD OR AIR-BLOC LF
EXTEND FLASHING 3" (SUGGESTED) INTO ROUGH OPENING (2" MIN)

HENRY 925 BES SEALANT OR AIR-BLOC LF
ENCAPSULATE UPPER EDGE OF SELF-ADHERED FLASHING REVERSE LAP

BLUESKIN METAL CLAD
LAP AIR BARRIER 2" ONTO FLASHING



INSTALL WINDOW PER WINDOW MANUFACTURER REQUIREMENTS (SEALANT AS SPECIFIED BY OTHERS)

ASTM E2112- METHOD B (SECTION VIEW)

FLASHING INSTALLED BEFORE WRB

NOTES:

1. DETAIL SHOWS **BLUESKIN METAL CLAD SELF-ADHERED WATER RESISTIVE AIR BARRIER**. SUBSTRATE SHOWN IS FOR REFERENCE ONLY. ACCEPTABLE SUBSTRATES INCLUDE PLYWOOD, OSB, CONCRETE, CMU, METAL, AND EXTERIOR GRADE SHEATHING.
2. SELF-ADHERED MEMBRANE PRIMER NOT SHOWN FOR CLARITY.
3. OTHER FLASHING OPTIONS INCLUDE: **BLUESKIN BUTYL FLASH, BLUESKIN SA OR BLUESKIN SA LT.**
4. HENRY WINDOW FLASHING DETAILS ARE BASED ON ASTM E2112. ACTUAL CONDITIONS MAY VARY. VERIFY PROJECT SPECIFIC WINDOW INSTALLATION REQUIREMENTS AND FLASHING COMPATIBILITY WITH DESIGN PROFESSIONAL.
5. INSTALL **BLUESKIN METAL CLAD** TO ACHIEVE A CONTINUOUS WATER-RESISTIVE BARRIER (WRB). INSULATION AND CLADDING NOT SHOWN FOR CLARITY.
6. REFER TO PRODUCT SPECIFIC TECHNICAL DATA SHEET (TDS) AND **BLUESKIN METAL CLAD** GUIDE SPECIFICATION FOR INSTALLATION PROCEDURES.



999 N. Pacific Coast Highway, Suite 800
El Segundo, CA 90245
800-486-1278 • www.henry.com

MANUFACTURER GUIDE DETAILS ARE FOR REFERENCE ONLY. HENRY DOES NOT ASSUME RESPONSIBILITY FOR ERRORS OR DEVIATIONS IN DESIGN OR ENGINEERING. PROJECT SPECIFIC VERIFICATION IS RECOMMENDED PRIOR TO INSTALLATION.

BLUESKIN METAL CLAD SELF-ADHERED AIR BARRIER

NON-FLANGED WINDOW

**ASTM E2112 METHOD B
FLASHING INSTALLED BEFORE WRB**

SCALE: N.T.S.

01-09-2020

MTLCLD-6B-A