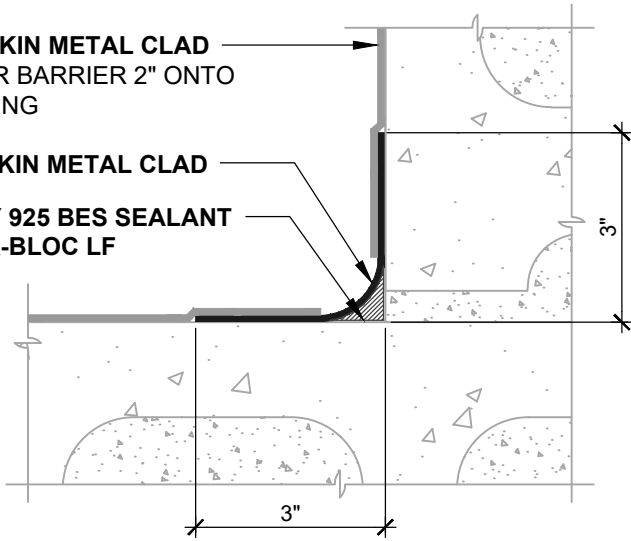


BLUESKIN METAL CLAD
LAP AIR BARRIER 2" ONTO
FLASHING

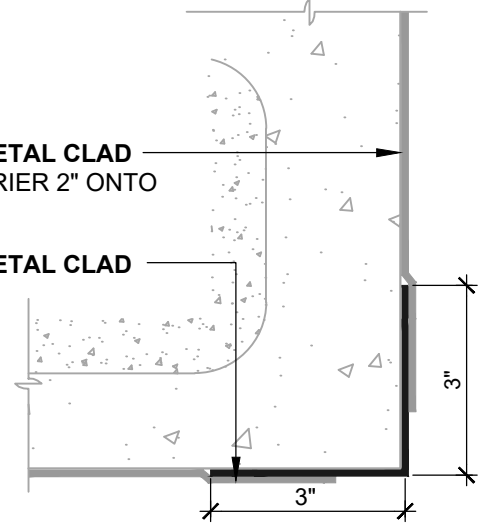
BLUESKIN METAL CLAD
HENRY 925 BES SEALANT
OR **AIR-BLOC LF**



INSIDE CORNER (PLAN VIEW)
FLASHING INSTALLED BEFORE WRB

BLUESKIN METAL CLAD
LAP AIR BARRIER 2" ONTO
FLASHING

BLUESKIN METAL CLAD

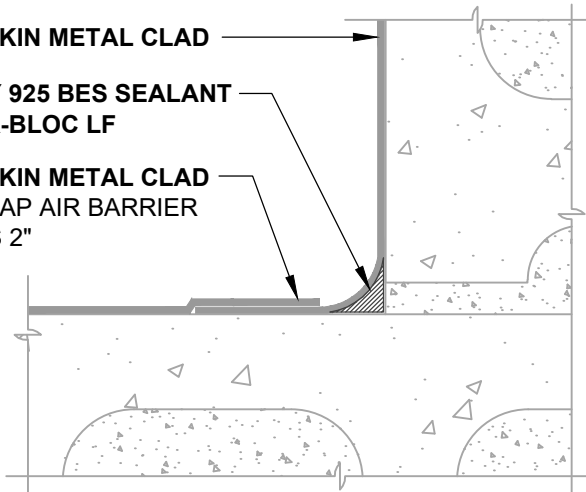


OUTSIDE CORNER (PLAN VIEW)
FLASHING INSTALLED BEFORE WRB

BLUESKIN METAL CLAD

HENRY 925 BES SEALANT
OR **AIR-BLOC LF**

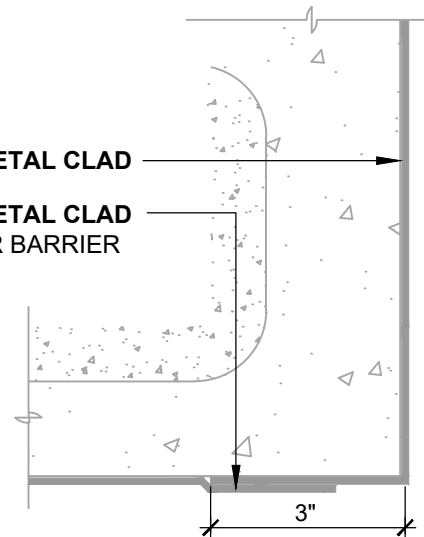
BLUESKIN METAL CLAD
OVERLAP AIR BARRIER
SEAMS 2"



INSIDE CORNER (PLAN VIEW)
WRB WRAPPED AROUND CORNER

BLUESKIN METAL CLAD

BLUESKIN METAL CLAD
OVERLAP AIR BARRIER
SEAMS 2"



OUTSIDE CORNER (PLAN VIEW)
WRB WRAPPED AROUND CORNER

NOTES:

1. DETAIL SHOWS **BLUESKIN METAL CLAD SELF-ADHERED WATER RESISTIVE AIR BARRIER**. SUBSTRATE SHOWN IS FOR REFERENCE ONLY. ACCEPTABLE SUBSTRATES INCLUDE PLYWOOD, OSB, CONCRETE, CMU, METAL, AND EXTERIOR GRADE SHEATHING.
2. FILL GROUT AND STRIKE CMU JOINTS FULL AND FLUSH TO CREATE A CONTINUOUS SUBSTRATE. REFER TO PRODUCT SPECIFIC TECHNICAL DATA SHEET FOR CURE TIME PRIOR TO AIR BARRIER INSTALLATION.
3. SELF-ADHERED MEMBRANE PRIMER NOT SHOWN FOR CLARITY.
4. OTHER FLASHING OPTIONS INCLUDE: **BLUESKIN BUTYL FLASH**, **BLUESKIN SA** OR **BLUESKIN SA LT**.
5. INSTALL **BLUESKIN METAL CLAD** TO ACHIEVE A CONTINUOUS WATER-RESISTIVE BARRIER (WRB). INSULATION AND CLADDING NOT SHOWN FOR CLARITY.
6. REFER TO PRODUCT SPECIFIC TECHNICAL DATA SHEET (TDS) AND **BLUESKIN METAL CLAD** GUIDE SPECIFICATION FOR INSTALLATION PROCEDURES.

MANUFACTURER GUIDE DETAILS ARE FOR REFERENCE ONLY. HENRY DOES NOT ASSUME RESPONSIBILITY FOR ERRORS OR DEVIATIONS IN DESIGN OR ENGINEERING. PROJECT SPECIFIC VERIFICATION IS RECOMMENDED PRIOR TO INSTALLATION.

BLUESKIN METAL CLAD SELF-ADHERED AIR BARRIER

INSIDE/OUTSIDE CORNERS

CONCRETE MASONRY UNITS (CMU)
STRIKE MASONRY JOINTS FLUSH

SCALE: N.T.S.

01-09-2020

MTLCLD-3B

Henry[®]

999 N. Pacific Coast Highway, Suite 800
El Segundo, CA 90245
800-486-1278 • www.henry.com