

**AIR BARRIER INSTALLED AFTER PUMADEC SYSTEM**

N.T.S

**METAL CLAD**  
(PRIMER NOT SHOWN FOR CLARITY)

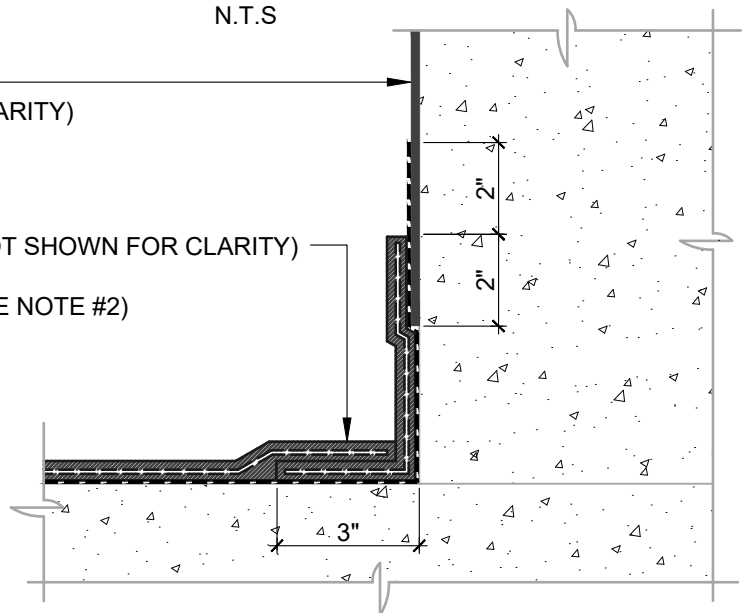
TOP/WEAR/TRAFFIC COAT (NOT SHOWN FOR CLARITY)  
FIELD MEMBRANE

- PUMADEC FLEX 30SL (SEE NOTE #2)

FLASHING

- PUMADEC FLEX 31MV
- PUMADEC N-FLEECE
- PUMADEC FLEX 31MV

PUMADEC PRIMER 20



**AIR BARRIER INSTALLED BEFORE PUMADEC SYSTEM**

N.T.S

**NOTES:**

1. DETAIL SHOWS **METAL CLAD SELF-ADHERED WATER RESISTIVE AIR BARRIER** AND **HENRY PUMADEC SYSTEM** TRANSITION. SUBSTRATE SHOWN IS FOR REFERENCE ONLY. REFER TO PRODUCT SPECIFIC TECHNICAL DATA SHEET (TDS) FOR PRODUCT SPECIFIC ACCEPTABLE SUBSTRATES.
2. TRANSITION DETAIL IS SUITABLE FOR BOTH REINFORCED AND UNREINFORCED **PUMADEC SYSTEM** FIELD MEMBRANE APPLICATIONS. TOP, WEAR, AND TRAFFIC COATING NOT SHOWN FOR CLARITY. REFER TO **PUMADEC SYSTEM** DETAILS FOR FURTHER CLARITY.
3. REFER TO PRODUCT SPECIFIC TECHNICAL DATA SHEET (TDS), GUIDE SPECIFICATION AND INSTALLATION MANUAL FOR INSTALLATION PROCEDURES.

**Henry**<sup>®</sup>

999 N. Pacific Coast Highway, Suite 800  
El Segundo, CA 90245  
800-486-1278 • www.henry.com

MANUFACTURER GUIDE DETAILS ARE FOR REFERENCE ONLY. HENRY DOES NOT ASSUME RESPONSIBILITY FOR ERRORS OR DEVIATIONS IN DESIGN OR ENGINEERING. PROJECT SPECIFIC VERIFICATION IS RECOMMENDED PRIOR TO INSTALLATION.

**METAL CLAD TIE-IN TO PUMADEC SYSTEM**

**TIE-IN DETAIL**

**EXPOSED FLASHING**  
**PUMADEC 31MV**

SCALE: N.T.S.

06-24-2019

**MTCLD-TID3A**