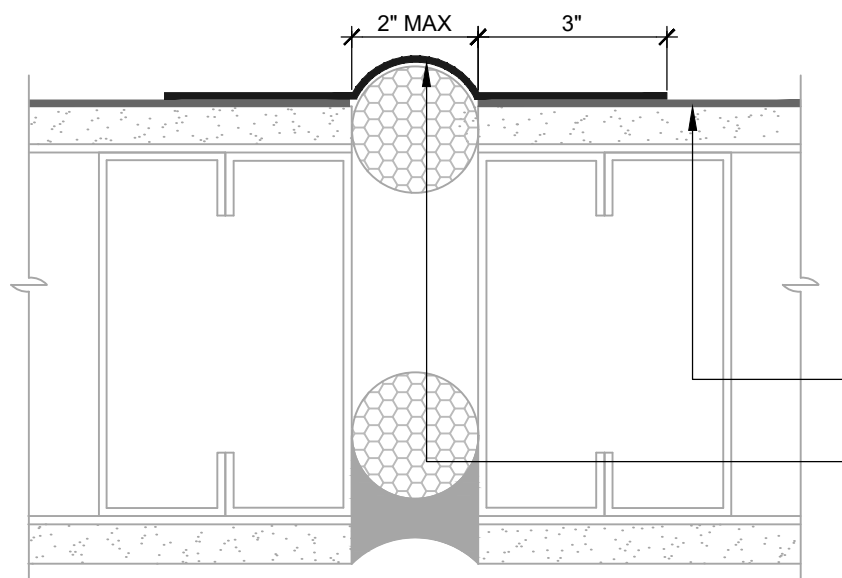


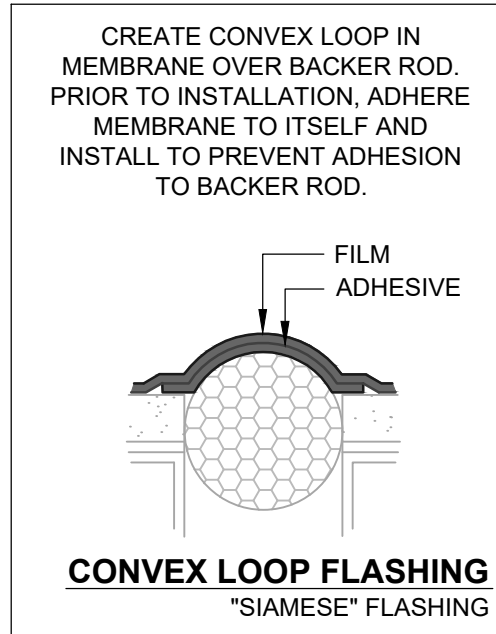
**GAPS UP TO 2" MAX (PLAN VIEW)**  
FLASHING INSTALLED BEFORE WRB



**GAPS UP TO 2" MAX (PLAN VIEW)**  
FLASHING INSTALLED AFTER WRB

**BLUESKIN SA**  
LAP AIR BARRIER 2" ONTO FLASHING

**BLUESKIN SA**  
(SEE CONVEX LOOP FLASHING DETAIL)



**BLUESKIN SA**

**BLUESKIN SA**  
(SEE CONVEX LOOP FLASHING DETAIL)

**NOTES:**

1. DETAIL SHOWS **BLUESKIN SA SELF-ADHERED WATER RESISTIVE AIR BARRIER**. SUBSTRATE SHOWN IS FOR REFERENCE ONLY. ACCEPTABLE SUBSTRATES INCLUDE PLYWOOD, OSB, CONCRETE, CMU, METAL, AND EXTERIOR GRADE SHEATHING.
2. REFER TO PRODUCT SPECIFIC TECHNICAL DATA SHEET (TDS) FOR PRIMER REQUIREMENTS. OTHER FLASHING OPTIONS INCLUDE: **BLUESKIN BUTYL FLASH, BLUESKIN SA LT OR METAL CLAD**.
3. INSTALL **BLUESKIN SA** TO ACHIEVE A CONTINUOUS WATER-RESISTIVE BARRIER (WRB). INSULATION AND CLADDING NOT SHOWN FOR CLARITY. REFER TO LOCAL CODE ORDINANCES FOR INSULATION AND VAPOR BARRIER REQUIREMENTS.
4. REFER TO PRODUCT SPECIFIC TECHNICAL DATA SHEET (TDS) AND **BLUESKIN SA** GUIDE SPECIFICATION FOR INSTALLATION PROCEDURES.

MANUFACTURER GUIDE DETAILS ARE FOR REFERENCE ONLY. HENRY DOES NOT ASSUME RESPONSIBILITY FOR ERRORS OR DEVIATIONS IN DESIGN OR ENGINEERING. PROJECT SPECIFIC VERIFICATION IS RECOMMENDED PRIOR TO INSTALLATION.

**BLUESKIN SA SELF-ADHERED WATER RESISTIVE AIR BARRIER**

**NON-MOVING JOINTS**

**SUBSTRATE GAPS UP TO 2" WIDE MAXIMUM  
SELF-ADHERED FLASHING**

SCALE: N.T.S. 08-12-2019

**BSSA-8C**

**Henry**<sup>®</sup>

999 N. Pacific Coast Highway, Suite 800  
El Segundo, CA 90245  
800-486-1278 • www.henry.com