

**FLASHING INSTALLED AFTER WRB**  
REVERSE LAP

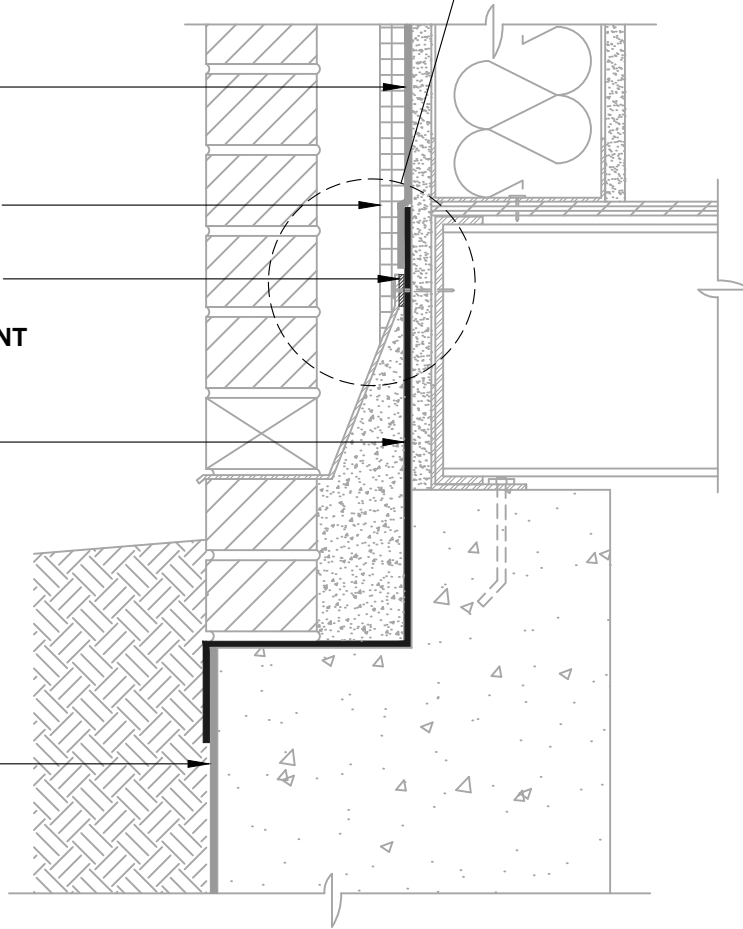
**BLUESKIN SA**  
LAP AIR BARRIER  
2" ONTO FLASHING

OPTIONAL INSULATION

SET TERMINATION BAR  
IN A BED OF  
**HENRY 925 BES SEALANT**

**BLUESKIN TWF**

HENRY BELOW GRADE  
WATERPROOFING  
(CONTACT HENRY FOR  
PROJECT SPECIFIC  
RECOMMENDATIONS)



**NOTES:**

1. DETAIL SHOWS **BLUESKIN SA SELF-ADHERED WATER RESISTIVE AIR BARRIER**. SUBSTRATE SHOWN IS FOR REFERENCE ONLY. ACCEPTABLE SUBSTRATES INCLUDE PLYWOOD, OSB, CONCRETE, CMU, METAL, AND EXTERIOR GRADE SHEATHING.
2. SELF-ADHERED MEMBRANE PRIMER NOT SHOWN FOR CLARITY.
3. INSTALL **BLUESKIN SA** TO ACHIEVE A CONTINUOUS WATER-RESISTIVE BARRIER (WRB). REFER TO LOCAL CODE ORDINANCES FOR INSULATION AND VAPOR BARRIER REQUIREMENTS.
4. REFER TO PRODUCT SPECIFIC TECHNICAL DATA SHEET (TDS) AND **BLUESKIN SA** GUIDE SPECIFICATION FOR INSTALLATION PROCEDURES.

**Henry**<sup>®</sup>

999 N. Pacific Coast Highway, Suite 800  
El Segundo, CA 90245  
800-486-1278 • www.henry.com

MANUFACTURER GUIDE DETAILS ARE FOR REFERENCE ONLY. HENRY DOES NOT ASSUME RESPONSIBILITY FOR ERRORS OR DEVIATIONS IN DESIGN OR ENGINEERING. PROJECT SPECIFIC VERIFICATION IS RECOMMENDED PRIOR TO INSTALLATION.

**BLUESKIN SA SELF-ADHERED WATER RESISTIVE AIR BARRIER**

**WALL FOUNDATION**  
**EXTERIOR WALL AND FOUNDATION TRANSITION**  
**SLAB BELOW GRADE WITH MASONRY LEDGE**

SCALE: N.T.S.

06-30-2020

**BSSA-1A**