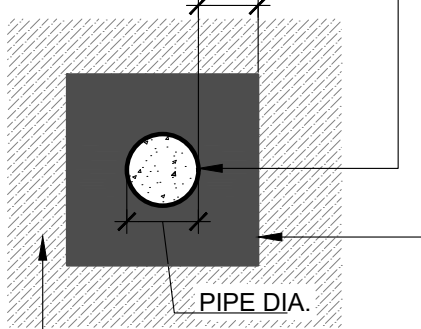


BLUESKIN PRESEAL TAPE 120V

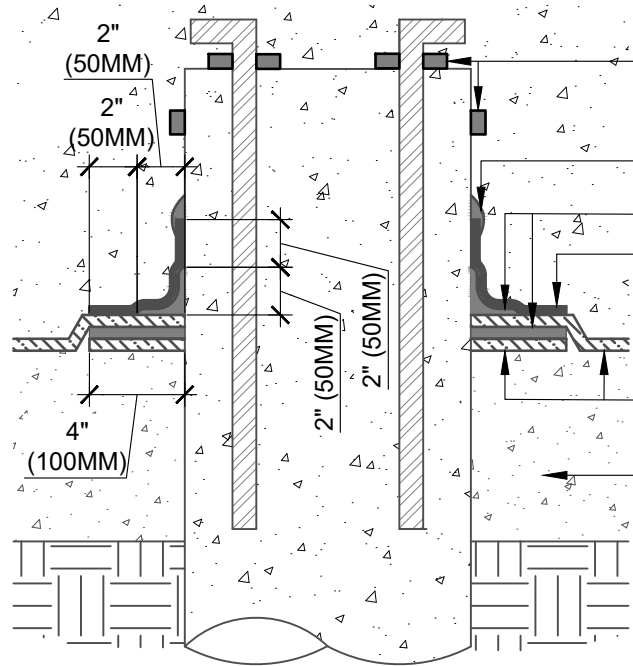
**MIRASTOP BW OR
MIRASTOP NBW (SEE NOTE #2)**

EXTEND BLUESKIN
PRESEAL PATCH BELOW
4" (100MM) ALL SIDES



**BLUESKIN PRESEAL 320
OR BLUESKIN PRESEAL 435**

**METHOD #2
PLAN VIEW**



**MIRASTOP BW OR
MIRASTOP NBW
(SEE NOTE #2)**

HENRY 925 BES SEALANT

HENRY 925 BES SEALANT

**BLUESKIN PRESEAL
TAPE 120V**

**BLUESKIN PRESEAL 320
OR BLUESKIN PRESEAL 435**

COMPACTED EARTH,
COMPACTED STONE, OR MUD
SLAB (COMPACTED EARTH
AND COMPACTED STONE
APPLICATIONS MUST USE
BLUESKIN PRESEAL 435)

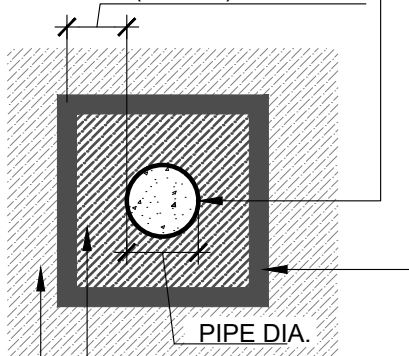
METHOD #1 (SECTION VIEW)

TARGET PATCH BEFORE FIELD MEMBRANE

BLUESKIN PRESEAL TAPE 120V

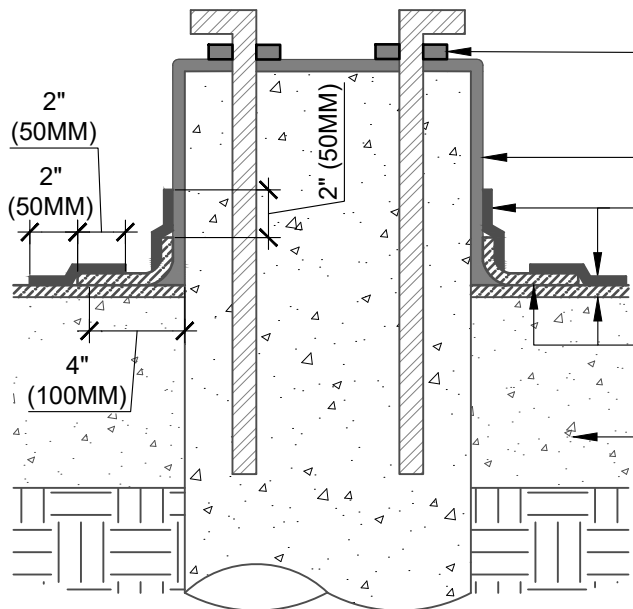
HENRY 925 BES SEALANT

4" (100MM) ALL SIDES



**BLUESKIN
PRESEAL 320
OR BLUESKIN
PRESEAL 435**

**METHOD #2
PLAN VIEW**



**MIRASTOP BW OR
MIRASTOP NBW
(SEE NOTE #2)**

HENRY 925 BES SEALANT

**BLUESKIN PRESEAL
TAPE 120V**

**BLUESKIN PRESEAL 320
OR BLUESKIN PRESEAL 435**

COMPACTED EARTH,
COMPACTED STONE, OR MUD
SLAB (COMPACTED EARTH
AND COMPACTED STONE
APPLICATIONS MUST USE
BLUESKIN PRESEAL 435)

METHOD #2 (SECTION VIEW)

TARGET PATCH AFTER FIELD MEMBRANE

NOTES:

1. DETAIL SHOWS HENRY PRE-APPLIED WATERPROOFING SYSTEM FOR APPLICATIONS USING HENRY **BLUESKIN PRESEAL 320** OR **BLUESKIN PRESEAL 435**. SUBSTRATE SHOWN IS FOR REFERENCE ONLY.
2. APPLICATIONS USING SWELLABLE WATERSTOPS: 3" (75MM) MINIMUM CONCRETE COVERAGE ON ALL SIDES.
3. REFER TO PRODUCT SPECIFIC TECHNICAL DATA SHEET (TDS) AND GUIDE SPECIFICATION FOR INSTALLATION PROCEDURES.

MANUFACTURER GUIDE DETAILS ARE FOR REFERENCE ONLY. HENRY DOES NOT ASSUME RESPONSIBILITY FOR ERRORS OR DEVIATIONS IN DESIGN OR ENGINEERING. PROJECT SPECIFIC VERIFICATION IS RECOMMENDED PRIOR TO INSTALLATION.

HENRY PRE-APPLIED WATERPROOFING SYSTEM

SLAB PENETRATION

**BLUESKIN PRESEAL 320 OR BLUESKIN PRESEAL 435
PILE FLASHING OPTIONS**

SCALE: N.T.S. 09-14-2022

BSPS-9G1

