

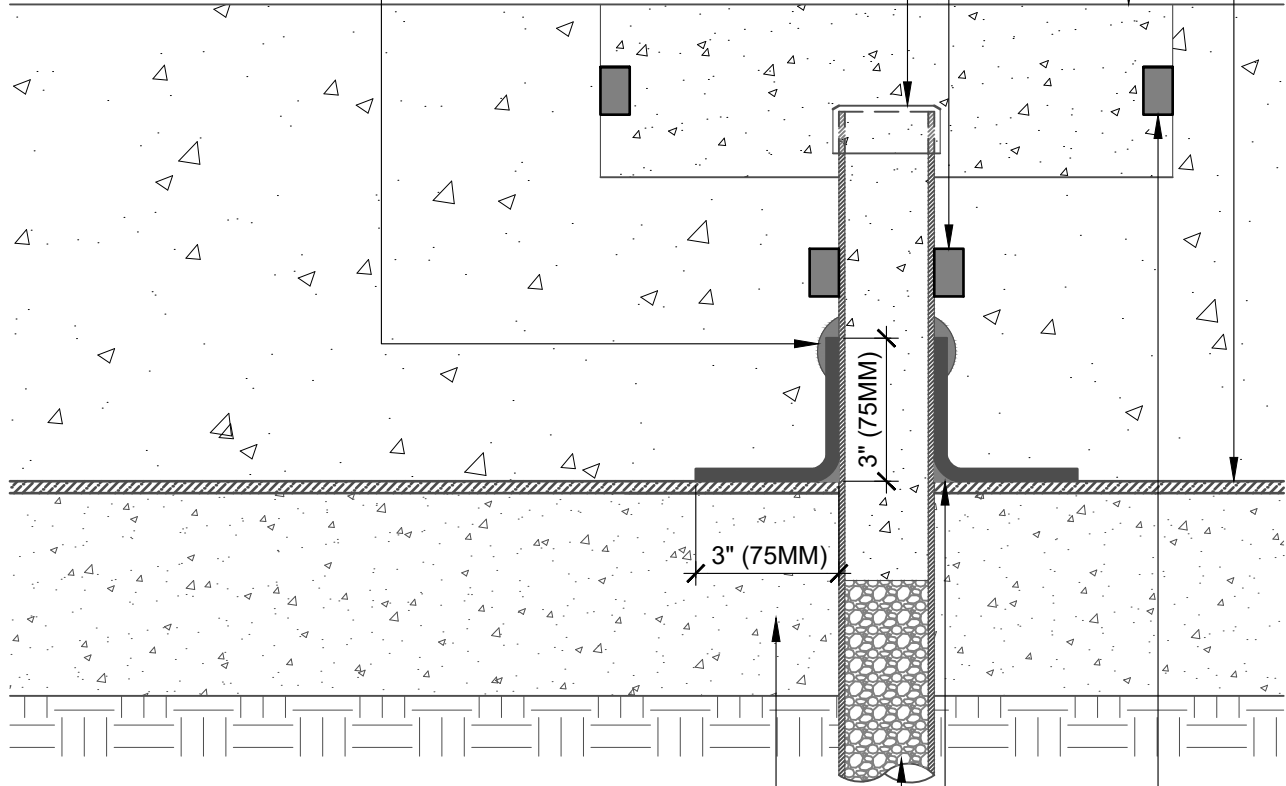
**BLUESKIN PRESEAL 320 OR BLUESKIN PRESEAL 435**

**BOX-OUT FILLED WITH CONCRETE**

WRAP PIPE/CONDUIT WITH **MIRASTOP BW OR MIRASTOP NBW**  
(3" (75MM) MINIMUM CONCRETE COVERAGE ON ALL SIDES)

SOLID PVC WELL PIPE WITH SOLVENT WELDED CAP (12" (300MM) LAYER  
OF HYDRAULIC GROUT OR PIPE FILLED TO TOP WITH CONCRETE)

**HENRY 925 BES SEALANT**



COMPACTED EARTH, COMPACTED STONE, OR MUD SLAB  
(COMPACTED EARTH AND COMPACTED STONE APPLICATIONS  
MUST USE **BLUESKIN PRESEAL 435**)

SEAL WELL PIPE WITH CLAY GRANULES (BY OTHERS)

SEAL PIPE WITH A 2" X 2" (50MM X 50MM) FILLET OF **HENRY 925 BES SEALANT**  
TO COVER METAL TO HORIZONTAL PRE-APPLIED WATERPROOFING CONNECTION

**MIRASTOP BW OR MIRASTOP NBW**  
(3" (75MM) MINIMUM CONCRETE COVERAGE ON ALL SIDES)

**NOTES:**

1. DETAIL SHOWS HENRY PRE-APPLIED WATERPROOFING SYSTEM FOR APPLICATIONS USING HENRY **BLUESKIN PRESEAL 320 OR BLUESKIN PRESEAL 435**. SUBSTRATE SHOWN IS FOR REFERENCE ONLY.
2. REMOVE DIRT, DEBRIS, RUST AND OTHER CONTAMINANTS FROM PIPE PRIOR TO **HENRY 925 BES SEALANT** INSTALLATION.
3. REFER TO PRODUCT SPECIFIC TECHNICAL DATA SHEET (TDS) AND GUIDE SPECIFICATION FOR INSTALLATION PROCEDURES.

MANUFACTURER GUIDE DETAILS ARE FOR REFERENCE ONLY. HENRY DOES NOT ASSUME RESPONSIBILITY FOR ERRORS OR DEVIATIONS IN DESIGN OR ENGINEERING. PROJECT SPECIFIC VERIFICATION IS RECOMMENDED PRIOR TO INSTALLATION.

**HENRY PRE-APPLIED WATERPROOFING SYSTEM**

**SLAB PENETRATION**

**BLUESKIN PRESEAL 320 OR BLUESKIN PRESEAL 435  
WELL PIPE SEALING BOX-OUT**

SCALE: N.T.S.

09-14-2022

**BSPS-9D1**

