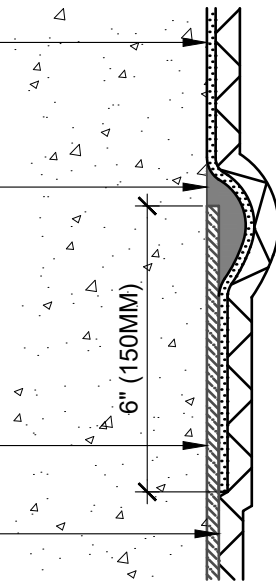


BLUESKIN WP200
(PRIMER NOT SHOWN FOR CLARITY - SEE DATA SHEET FOR RECOMMENDATIONS)

TERMINATE PRE-APPLIED WATERPROOFING WITH **HENRY 925 BES SEALANT**

BLUESKIN PRESEAL 320
OR **BLUESKIN PRESEAL 435**

HENRY DRAINBOARD



METHOD #1 - TERMINATION SEALANT
FULLY BONDED MEMBRANE

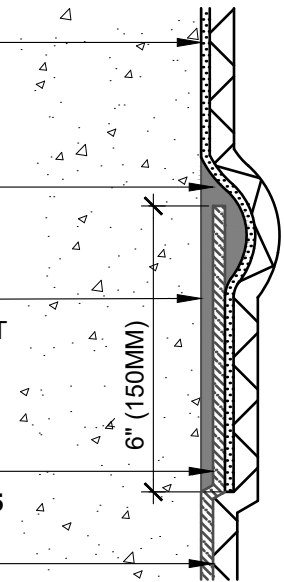
BLUESKIN WP200
(PRIMER NOT SHOWN FOR CLARITY - SEE DATA SHEET FOR RECOMMENDATIONS)

TERMINATE PRE-APPLIED WATERPROOFING WITH **HENRY 925 BES SEALANT**

SET PRE-APPLIED WATERPROOFING INTO WET **HENRY 925 BES SEALANT**

BLUESKIN PRESEAL 320
OR **BLUESKIN PRESEAL 435**

HENRY DRAINBOARD



METHOD #2 - TERMINATION SEALANT
TEMPORARILY SECURED MEMBRANE

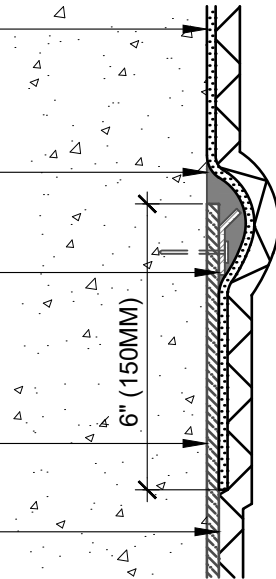
BLUESKIN WP200
(PRIMER NOT SHOWN FOR CLARITY - SEE DATA SHEET FOR RECOMMENDATIONS)

TERMINATE PRE-APPLIED WATERPROOFING WITH **HENRY 925 BES SEALANT**

SECURE MEMBRANE WITH TERMINATION BAR

BLUESKIN PRESEAL 320
OR **BLUESKIN PRESEAL 435**

HENRY DRAINBOARD



METHOD #3 - TERMINATION SEALANT
TEMPORARILY SECURED MEMBRANE

TERMINATION GUIDELINES

1. TERMINATE PRE-APPLIED WATERPROOFING WITH **HENRY 925 BES SEALANT**.
2. SET PRE-APPLIED WATERPROOFING INTO WET **HENRY 925 BES SEALANT** WHERE TEMPORARILY SECURED MEMBRANE WAS NOT FULLY BONDED TO CONCRETE.
3. SET PRE-APPLIED WATERPROOFING INTO WET **HENRY 925 BES SEALANT** WHERE TEMPORARILY SECURED MEMBRANE WAS NOT FULLY BONDED TO CONCRETE AND SITE DOES NOT ALLOW FOR **HENRY 925 BES SEALANT** EMBEDMENT.

NOTES:

1. DETAIL SHOWS HENRY PRE-APPLIED WATERPROOFING SYSTEM FOR APPLICATIONS USING HENRY **BLUESKIN PRESEAL 320** OR **BLUESKIN PRESEAL 435**. SUBSTRATE SHOWN IS FOR REFERENCE ONLY.
2. HENRY RECOMMENDS THE USE OF A DRAINBOARD IN NON-HYDROSTATIC CONDITIONS, OR AS A SUBSTRATE PREPARATION.
3. REFER TO PRODUCT SPECIFIC TECHNICAL DATA SHEET (TDS) AND GUIDE SPECIFICATION FOR INSTALLATION PROCEDURES.

MANUFACTURER GUIDE DETAILS ARE FOR REFERENCE ONLY. HENRY DOES NOT ASSUME RESPONSIBILITY FOR ERRORS OR DEVIATIONS IN DESIGN OR ENGINEERING. PROJECT SPECIFIC VERIFICATION IS RECOMMENDED PRIOR TO INSTALLATION.

HENRY PRE-APPLIED WATERPROOFING SYSTEM

VERTICAL TERMINATIONS
BLUESKIN PRESEAL 320 OR BLUESKIN PRESEAL 435
TRANSITION WITH BLUESKIN WP200

SCALE: N.T.S. 09-14-2022

BSPS-8A

