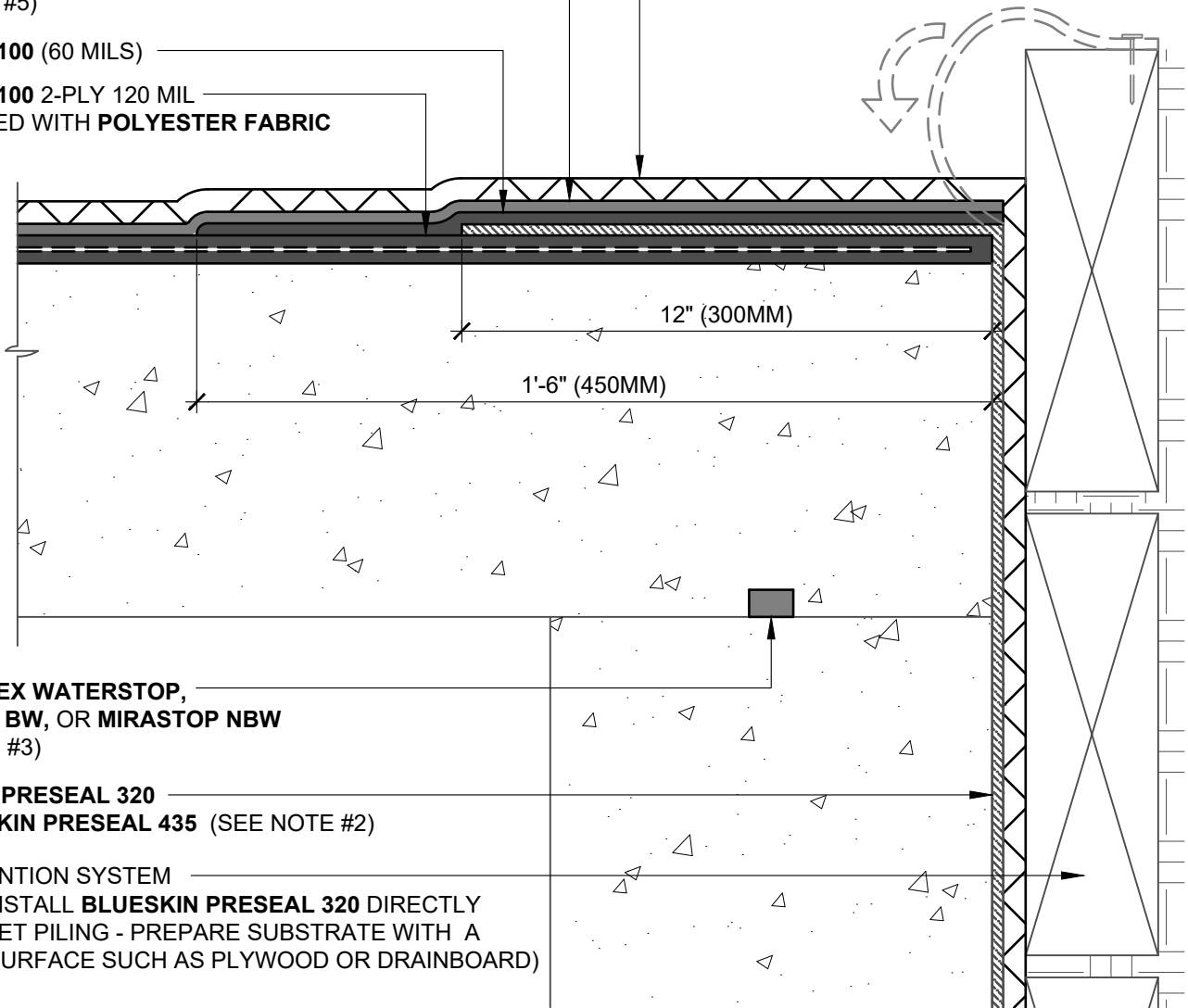


HENRY DRAINBOARD
MODIFIEDPLUS G100S/S OR PROTECTION FABRIC GR08
 (SEE NOTE #5)

HENRY CM100 (60 MILS)

HENRY CM100 2-PLY 120 MIL
 REINFORCED WITH **POLYESTER FABRIC**

EXTEND PRE-APPLIED WATERPROOFING 12" (300MM) BEYOND ANTICIPATED CONCRETE LEDGE AND TEMPORARILY SECURE UNTIL SUBSTRATE IS IN ACCORDANCE WITH INSTALLATION REQUIREMENTS



SYNKO-FLEX WATERSTOP, MIRASTOP BW, OR MIRASTOP NBW
 (SEE NOTE #3)

BLUESKIN PRESEAL 320 OR BLUESKIN PRESEAL 435 (SEE NOTE #2)

SOIL RETENTION SYSTEM
 (DO NOT INSTALL **BLUESKIN PRESEAL 320** DIRECTLY ONTO SHEET PILING - PREPARE SUBSTRATE WITH A SMOOTH SURFACE SUCH AS PLYWOOD OR DRAINBOARD)

NOTES:

1. DETAIL SHOWS HENRY PRE-APPLIED WATERPROOFING SYSTEM FOR APPLICATIONS USING HENRY **BLUESKIN PRESEAL 320** OR **BLUESKIN PRESEAL 435**. SUBSTRATE SHOWN IS FOR REFERENCE ONLY.
2. HENRY **BLUESKIN PRESEAL 435** CAN BE INSTALLED DIRECTLY ONTO SHEET PILING. **BLUESKIN PRESEAL 320** REQUIRES A SMOOTH SURFACE SUCH AS PLYWOOD OR DRAINBOARD.
3. APPLICATIONS USING SWELLABLE WATERSTOPS: 3" (75MM) MINIMUM CONCRETE COVERAGE ON ALL SIDES.
4. HENRY RECOMMENDS THE USE OF A DRAINBOARD IN NON-HYDROSTATIC CONDITIONS, OR AS A SUBSTRATE PREPARATION.
5. PROJECTS LOCATED IN CANADA MAY USE **HENRY 990-31 POLYPROPYLENE PROTECTION BOARD** IN LIEU OF STANDARD PROTECTION COURSE WHERE REQUIRED.
6. REFER TO PRODUCT SPECIFIC TECHNICAL DATA SHEET (TDS) AND GUIDE SPECIFICATION FOR INSTALLATION PROCEDURES.



MANUFACTURER GUIDE DETAILS ARE FOR REFERENCE ONLY. HENRY DOES NOT ASSUME RESPONSIBILITY FOR ERRORS OR DEVIATIONS IN DESIGN OR ENGINEERING. PROJECT SPECIFIC VERIFICATION IS RECOMMENDED PRIOR TO INSTALLATION.

HENRY PRE-APPLIED WATERPROOFING SYSTEM

DECK TO WALL TRANSITION
BLUESKIN PRESEAL 320 OR BLUESKIN PRESEAL 435
TRANSITION WITH HENRY CM100

SCALE: N.T.S.

09-14-2022

BSPS-7C1