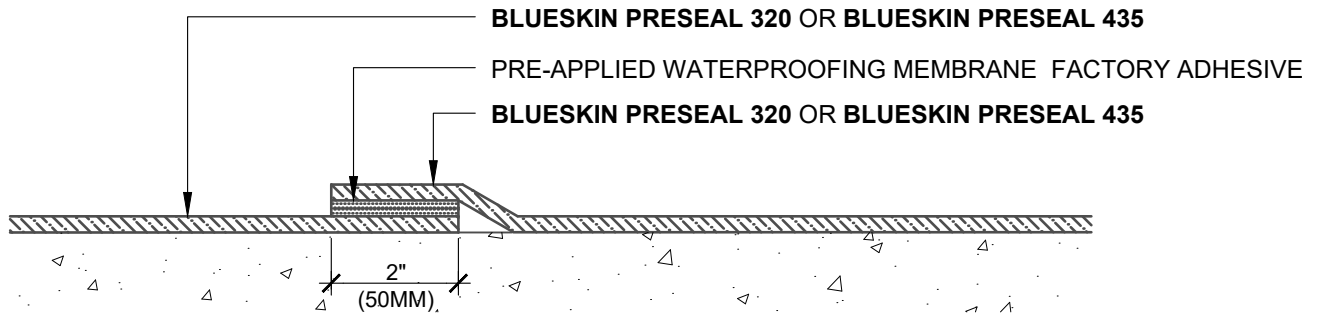


MEMBRANE FACTORY ADHESIVE INSTALLATION GUIDELINES

1. OVERLAP WATERPROOFING MEMBRANE AT FACTORY ADHESIVE.
2. REMOVE FACTORY ADHESIVE PLASTIC RELEASE LINER.
3. FIRMLY PRESS MEMBRANE SEAM INTO PLACE.
4. ROLL MEMBRANE SEAM WITH STEEL ROLLER TO ENSURE CONTINUOUS ADHESION.
5. CENTER **BLUESKIN PRESEAL TAPE 120V** AT SEAM EDGE AND ADHERE TAPE ONTO MEMBRANE SEAM
4. ROLL TAPE WITH STEEL ROLLER TO ENSURE CONTINUOUS ADHESION.

FACTORY ADHESIVE
FACTORY ADHESIVE ON ONE SIDE OF SEAM



MEMBRANE FACTORY ADHESIVE INSTALLATION GUIDELINES

1. OVERLAP WATERPROOFING MEMBRANE AT FACTORY ADHESIVE.
2. REMOVE PLASTIC RELEASE LINER ON BOTH MEMBRANES TO EXPOSE ADHESIVE.
3. FIRMLY PRESS MEMBRANE SEAM INTO PLACE.
4. ROLL MEMBRANE SEAM WITH STEEL ROLLER TO ENSURE CONTINUOUS ADHESION.

FACTORY ADHESIVE
DUAL FACTORY ADHESIVE AT SEAM

NOTES:

1. DETAIL SHOWS HENRY PRE-APPLIED WATERPROOFING SYSTEM FOR APPLICATIONS USING HENRY **BLUESKIN PRESEAL 320** OR **BLUESKIN PRESEAL 435**. SUBSTRATE SHOWN IS FOR REFERENCE ONLY.
2. REFER TO PRODUCT SPECIFIC TECHNICAL DATA SHEET (TDS) AND GUIDE SPECIFICATION FOR INSTALLATION PROCEDURES.

MANUFACTURER GUIDE DETAILS ARE FOR REFERENCE ONLY. HENRY DOES NOT ASSUME RESPONSIBILITY FOR ERRORS OR DEVIATIONS IN DESIGN OR ENGINEERING. PROJECT SPECIFIC VERIFICATION IS RECOMMENDED PRIOR TO INSTALLATION.

HENRY PRE-APPLIED WATERPROOFING SYSTEM

MEMBRANE SEAM OVERLAP
BLUESKIN PRESEAL 320 OR BLUESKIN PRESEAL 435
FACTORY ADHESIVE AT MEMBRANE SEAMS

SCALE: N.T.S. 09-14-2022

BSPS-3A

