

**BLUESKIN PRESEAL 320**  
OR **BLUESKIN PRESEAL 435**  
(UNDER SLAB PRE-APPLIED WATERPROOFING)

**HENRY DRAINBOARD** (SEE NOTE #3)

**BLUESKIN PRESEAL 320**  
OR **BLUESKIN PRESEAL 435** (SEE NOTE #2)

SEAL PRE-APPLIED WATERPROOFING SEAMS  
WITH **BLUESKIN PRESEAL TAPE 120V**

**SOLDIER PILE**

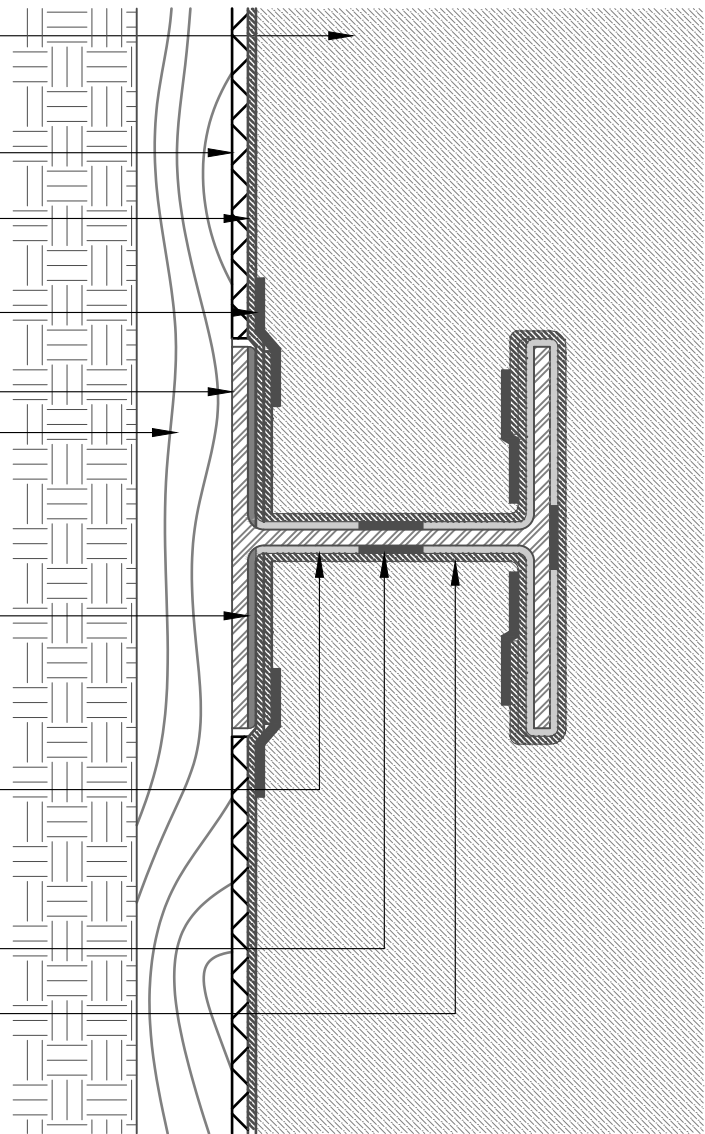
**SOIL RETENTION SYSTEM**  
(DO NOT INSTALL **BLUESKIN PRESEAL 320**  
DIRECTLY ONTO SHEET PILING - PREPARE  
SUBSTRATE WITH A SMOOTH SURFACE SUCH  
AS PLYWOOD OR DRAINBOARD)

SET PRE-APPLIED WATERPROOFING INTO  
WET **HENRY 925 BES SEALANT**  
(ATTACH WITH **BLUESKIN PRESEAL TAPE 50S**  
IF INSTALLING OVER CURED SEALANT)

SEAL BASE OF **SOLDIER PILE** WITH A CANT  
BEAD OF **HENRY 925 BES SEALANT** TO COVER  
METAL TO UNDER SLAB PRE-APPLIED  
WATERPROOFING CONNECTION

**BLUESKIN PRESEAL TAPE 50S**

**BLUESKIN PRESEAL 320**  
OR **BLUESKIN PRESEAL 435** (SEE NOTE #2)



**PLAN VIEW - TIE-IN AT UNDER SLAB WATERPROOFING**

SOLDIER PILE AT WOOD LAGGING

NOTES:

1. DETAIL SHOWS HENRY PRE-APPLIED WATERPROOFING SYSTEM FOR APPLICATIONS USING HENRY **BLUESKIN PRESEAL 320** OR **BLUESKIN PRESEAL 435**. SUBSTRATE SHOWN IS FOR REFERENCE ONLY.
2. HENRY **BLUESKIN PRESEAL 435** CAN BE INSTALLED DIRECTLY ONTO SHEET PILING. **BLUESKIN PRESEAL 320** REQUIRES A SMOOTH SURFACE SUCH AS PLYWOOD OR DRAINBOARD.
3. HENRY RECOMMENDS THE USE OF A DRAINBOARD IN NON-HYDROSTATIC CONDITIONS, OR AS A SUBSTRATE PREPARATION.
4. REFER TO PRODUCT SPECIFIC TECHNICAL DATA SHEET (TDS) AND GUIDE SPECIFICATION FOR INSTALLATION PROCEDURES.



MANUFACTURER GUIDE DETAILS ARE FOR REFERENCE ONLY. HENRY DOES NOT ASSUME RESPONSIBILITY FOR ERRORS OR DEVIATIONS IN DESIGN OR ENGINEERING. PROJECT SPECIFIC VERIFICATION IS RECOMMENDED PRIOR TO INSTALLATION.

**HENRY PRE-APPLIED WATERPROOFING SYSTEM**

**SOLDIER PILE**

**BLUESKIN PRESEAL 320 OR BLUESKIN PRESEAL 435**  
**BACK-LAGGED SOLDIER PILE - HYDROSTATIC**

SCALE: N.T.S.

09-14-2022

**BSPS-2B1A**