

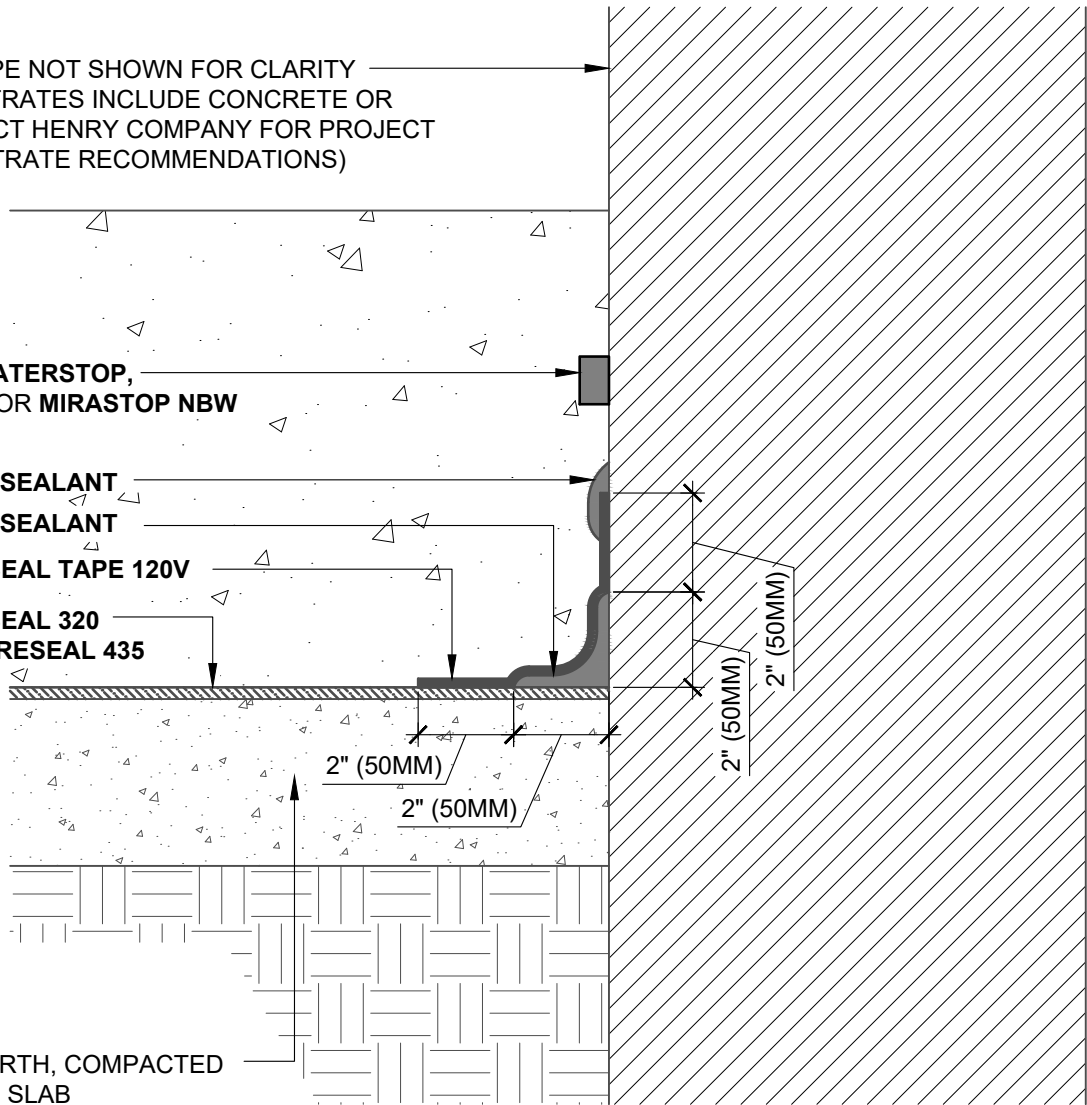
SUBSTRATE TYPE NOT SHOWN FOR CLARITY
(TYPICAL SUBSTRATES INCLUDE CONCRETE OR
METAL - CONTACT HENRY COMPANY FOR PROJECT
SPECIFIC SUBSTRATE RECOMMENDATIONS)

SYNKO-FLEX WATERSTOP,
MIRASTOP BW, OR MIRASTOP NBW
(SEE NOTE #2)

HENRY 925 BES SEALANT
HENRY 925 BES SEALANT

BLUESKIN PRESEAL TAPE 120V

BLUESKIN PRESEAL 320
OR BLUESKIN PRESEAL 435



COMPACTED EARTH, COMPACTED
STONE, OR MUD SLAB
(COMPACTED EARTH AND
COMPACTED STONE APPLICATIONS
MUST USE **BLUESKIN PRESEAL 435**)

NOTES:

1. DETAIL SHOWS HENRY PRE-APPLIED WATERPROOFING SYSTEM FOR APPLICATIONS USING HENRY **BLUESKIN PRESEAL 320** OR **BLUESKIN PRESEAL 435**. SUBSTRATE SHOWN IS FOR REFERENCE ONLY.
2. APPLICATIONS USING SWELLABLE WATERSTOPS: 3" (75MM) MINIMUM CONCRETE COVERAGE ON ALL SIDES.
3. REFER TO PRODUCT SPECIFIC TECHNICAL DATA SHEET (TDS) AND GUIDE SPECIFICATION FOR INSTALLATION PROCEDURES.



MANUFACTURER GUIDE DETAILS ARE FOR REFERENCE ONLY. HENRY DOES NOT ASSUME RESPONSIBILITY FOR ERRORS OR DEVIATIONS IN DESIGN OR ENGINEERING. PROJECT SPECIFIC VERIFICATION IS RECOMMENDED PRIOR TO INSTALLATION.

HENRY PRE-APPLIED WATERPROOFING SYSTEM

**STRAIGHT EDGE
PENETRATION**

SCALE: N.T.S.

09-14-2022

BSPS-1F1A