

HENRY AIR BARRIER
(CONTACT HENRY FOR
PROJECT SPECIFIC
RECOMMENDATIONS)

SET FLASHING/TERMINATION
BAR IN A BED OF
HENRY 925 BES SEALANT

BLUESKIN TWF
(PRIMER NOT SHOWN FOR
CLARITY - SEE DATA SHEET
FOR RECOMMENDATIONS)

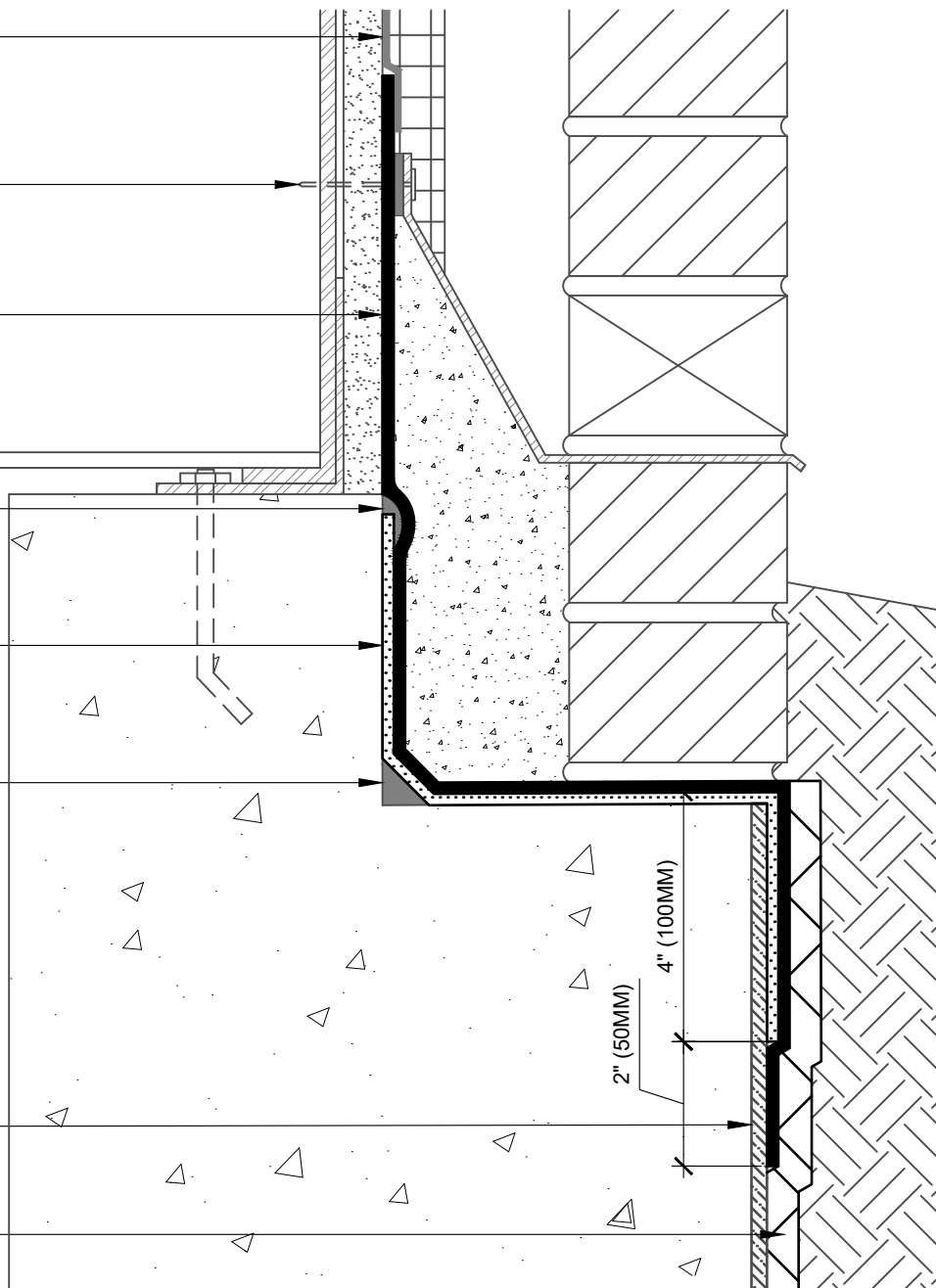
HENRY 925 BES SEALANT

BLUESKIN WP200
(PRIMER NOT SHOWN FOR
CLARITY - SEE DATA SHEET
FOR RECOMMENDATIONS)

HENRY 925 BES SEALANT
(EXTEND 3/4" (20MM) EACH SIDE)

BLUESKIN PRESEAL 320
OR **BLUESKIN PRESEAL 435**
(SEE NOTE #2)

HENRY DRAINBOARD
(SEE NOTE #3)



NOTES:

1. DETAIL SHOWS HENRY PRE-APPLIED WATERPROOFING SYSTEM FOR APPLICATIONS USING HENRY **BLUESKIN PRESEAL 320** OR **BLUESKIN PRESEAL 435**. SUBSTRATE SHOWN IS FOR REFERENCE ONLY.
2. HENRY **BLUESKIN PRESEAL 435** CAN BE INSTALLED DIRECTLY ONTO SHEET PILING. **BLUESKIN PRESEAL 320** REQUIRES A SMOOTH SURFACE SUCH AS PLYWOOD OR DRAINBOARD.
3. HENRY RECOMMENDS THE USE OF A DRAINBOARD IN NON-HYDROSTATIC CONDITIONS, OR AS A SUBSTRATE PREPARATION.
4. REFER TO PRODUCT SPECIFIC TECHNICAL DATA SHEET (TDS) AND GUIDE SPECIFICATION FOR INSTALLATION PROCEDURES.

MANUFACTURER GUIDE DETAILS ARE FOR REFERENCE ONLY. HENRY DOES NOT ASSUME RESPONSIBILITY FOR ERRORS OR DEVIATIONS IN DESIGN OR ENGINEERING. PROJECT SPECIFIC VERIFICATION IS RECOMMENDED PRIOR TO INSTALLATION.

HENRY PRE-APPLIED WATERPROOFING SYSTEM

POST-APPLIED TRANSITION

**BLUESKIN PRESEAL 320 OR BLUESKIN PRESEAL 435
TRANSITION WITH BLUESKIN WP200 - MASONRY LEDGE**

SCALE: N.T.S.

09-14-2022

BSPS-10B3

