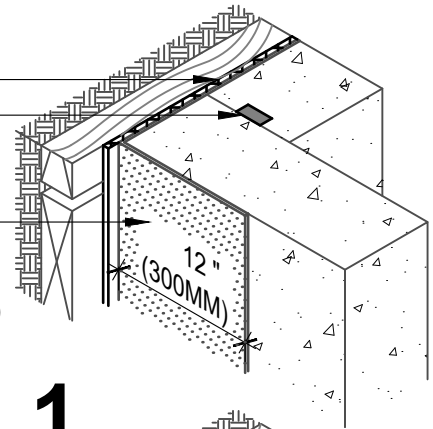


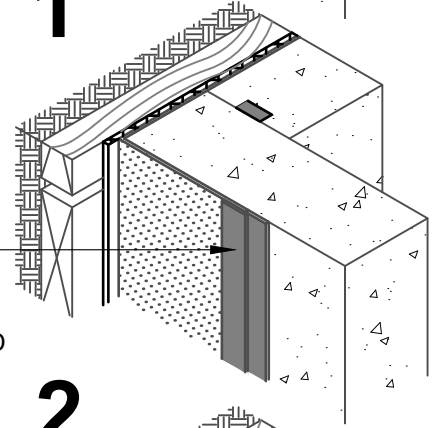
**HENRY DRAINAGE COMPOSITE**  
**SYNKO-FLEX WATERSTOP,**  
**MIRASTOP BW, OR MIRASTOP NBW**  
 (SEE NOTE #2)

**BLUESKIN PRESEAL 320**  
 OR **BLUESKIN PRESEAL 435**  
 (EXTEND 12" (300MM) ONTO FORM  
 WORK PRIOR TO CONCRETE POUR)



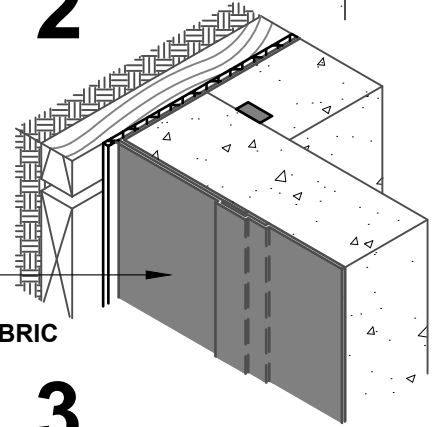
**1**

**BLUESKIN PRESEAL  
 TAPE 120V EXTEND  
 2" (50MM) EACH SIDE**  
 (TAPE NOT REQUIRED  
 WHERE PRE-APPLIED  
 WATERPROOFING  
 IS FULLY BONDED  
 TO CONCRETE)

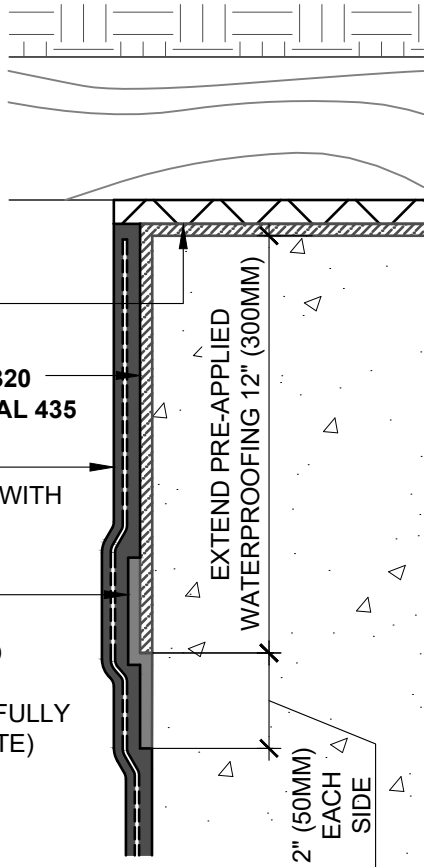


**2**

**HENRY CM100 2-PLY  
 120 MIL REINFORCED  
 WITH POLYESTER FABRIC**



**3**



**HENRY DRAINAGE  
 COMPOSITE**  
**BLUESKIN PRESEAL 320  
 OR BLUESKIN PRESEAL 435**  
**HENRY CM100 2-PLY  
 120 MIL REINFORCED WITH  
 POLYESTER FABRIC**  
**BLUESKIN PRESEAL  
 TAPE 120V**  
 (TAPE NOT REQUIRED  
 WHERE PRE-APPLIED  
 WATERPROOFING IS FULLY  
 BONDED TO CONCRETE)

**PLAN VIEW**

TRANSITION AT GRADE CHANGE

**ISOMETRIC**

TRANSITION AT GRADE CHANGE

**NOTES:**

1. DETAIL SHOWS HENRY PRE-APPLIED WATERPROOFING SYSTEM FOR APPLICATIONS USING HENRY **BLUESKIN PRESEAL 320** OR **BLUESKIN PRESEAL 435**. SUBSTRATE SHOWN IS FOR REFERENCE ONLY.
2. HENRY **BLUESKIN PRESEAL 435** CAN BE INSTALLED DIRECTLY ONTO SHEET PILING. **BLUESKIN PRESEAL 320** REQUIRES A SMOOTH SURFACE SUCH AS PLYWOOD OR DRAINBOARD.
3. APPLICATIONS USING SWELLABLE WATERSTOPS: 3" (75MM) MINIMUM CONCRETE COVERAGE ON ALL SIDES.
4. HENRY RECOMMENDS THE USE OF A DRAINBOARD IN NON-HYDROSTATIC CONDITIONS, OR AS A SUBSTRATE PREPARATION.
5. REFER TO PRODUCT SPECIFIC TECHNICAL DATA SHEET (TDS) AND GUIDE SPECIFICATION FOR INSTALLATION PROCEDURES.



MANUFACTURER GUIDE DETAILS ARE FOR REFERENCE ONLY. HENRY DOES NOT ASSUME RESPONSIBILITY FOR ERRORS OR DEVIATIONS IN DESIGN OR ENGINEERING. PROJECT SPECIFIC VERIFICATION IS RECOMMENDED PRIOR TO INSTALLATION.

**HENRY PRE-APPLIED WATERPROOFING SYSTEM**

**POST-APPLIED TRANSITION**

**BLUESKIN PRESEAL 320 OR BLUESKIN PRESEAL 435  
 TRANSITION WITH HENRY CM100 - VERTICAL WALL**

SCALE: N.T.S.

09-14-2022

**BSPS-10A1**