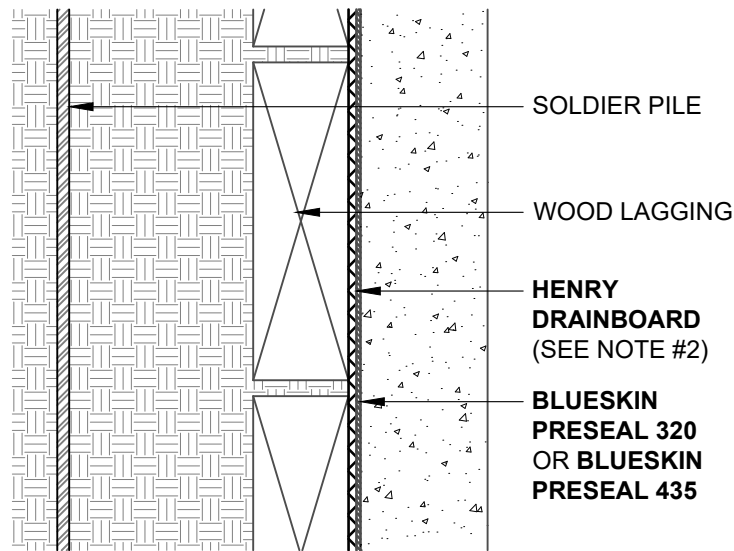
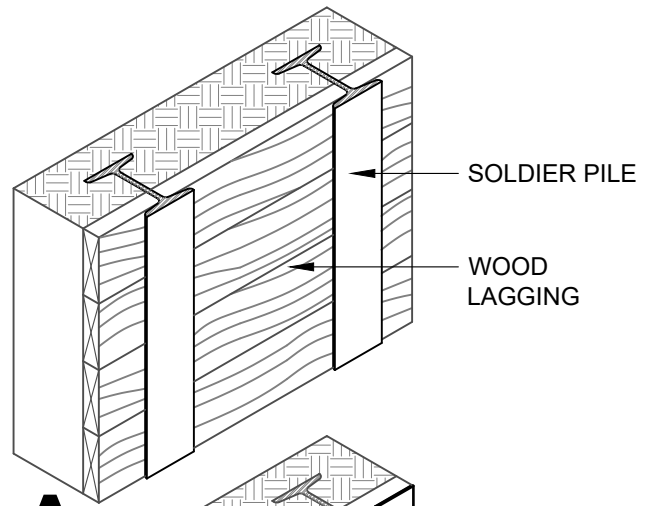


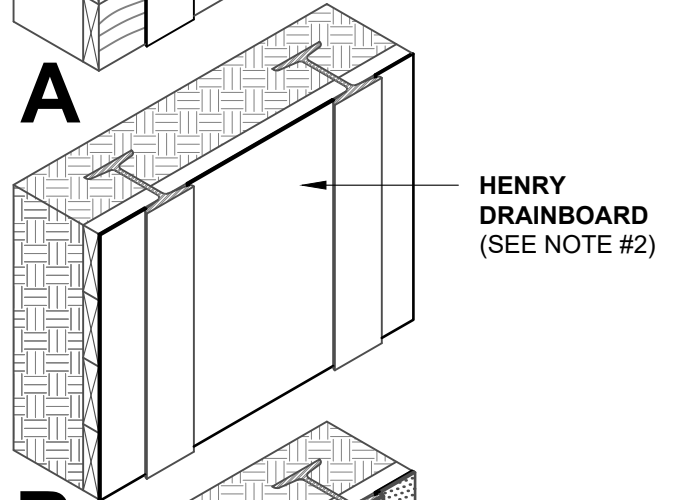
PLAN VIEW
CUT THROUGH WOOD LAGGING



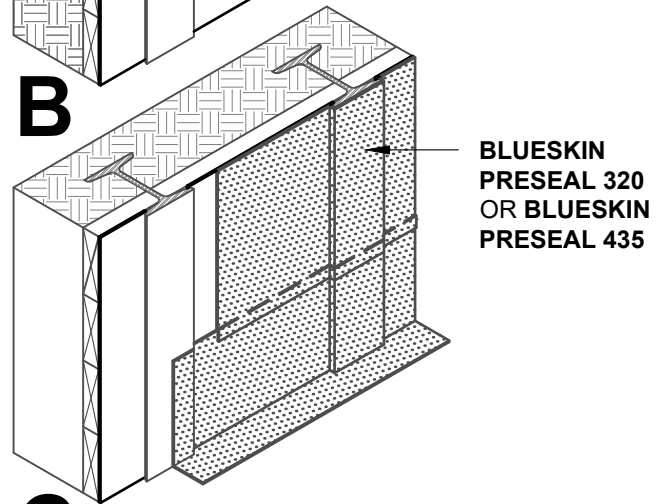
SECTION VIEW
CUT THROUGH WOOD LAGGING



A



B



C

ISOMETRIC VIEW
STEP-BY-STEP WOOD LAGGING

NOTES:

1. DETAIL SHOWS HENRY PRE-APPLIED WATERPROOFING SYSTEM FOR APPLICATIONS USING HENRY **BLUESKIN PRESEAL 320** OR **BLUESKIN PRESEAL 435**. SUBSTRATE SHOWN IS FOR REFERENCE ONLY.
2. HENRY RECOMMENDS THE USE OF A DRAINBOARD IN NON-HYDROSTATIC CONDITIONS, OR AS A SUBSTRATE PREPARATION.
3. REFER TO PRODUCT SPECIFIC TECHNICAL DATA SHEET (TDS) AND GUIDE SPECIFICATION FOR INSTALLATION PROCEDURES.

MANUFACTURER GUIDE DETAILS ARE FOR REFERENCE ONLY. HENRY DOES NOT ASSUME RESPONSIBILITY FOR ERRORS OR DEVIATIONS IN DESIGN OR ENGINEERING. PROJECT SPECIFIC VERIFICATION IS RECOMMENDED PRIOR TO INSTALLATION.

HENRY PRE-APPLIED WATERPROOFING SYSTEM

WOOD LAGGING WALLS

**BLUESKIN PRESEAL 320 OR BLUESKIN PRESEAL 435
WOOD LAGGING PRIOR TO CAST-IN-PLACE WALL**

SCALE: N.T.S. 09-14-2022

BSPS-0E4

