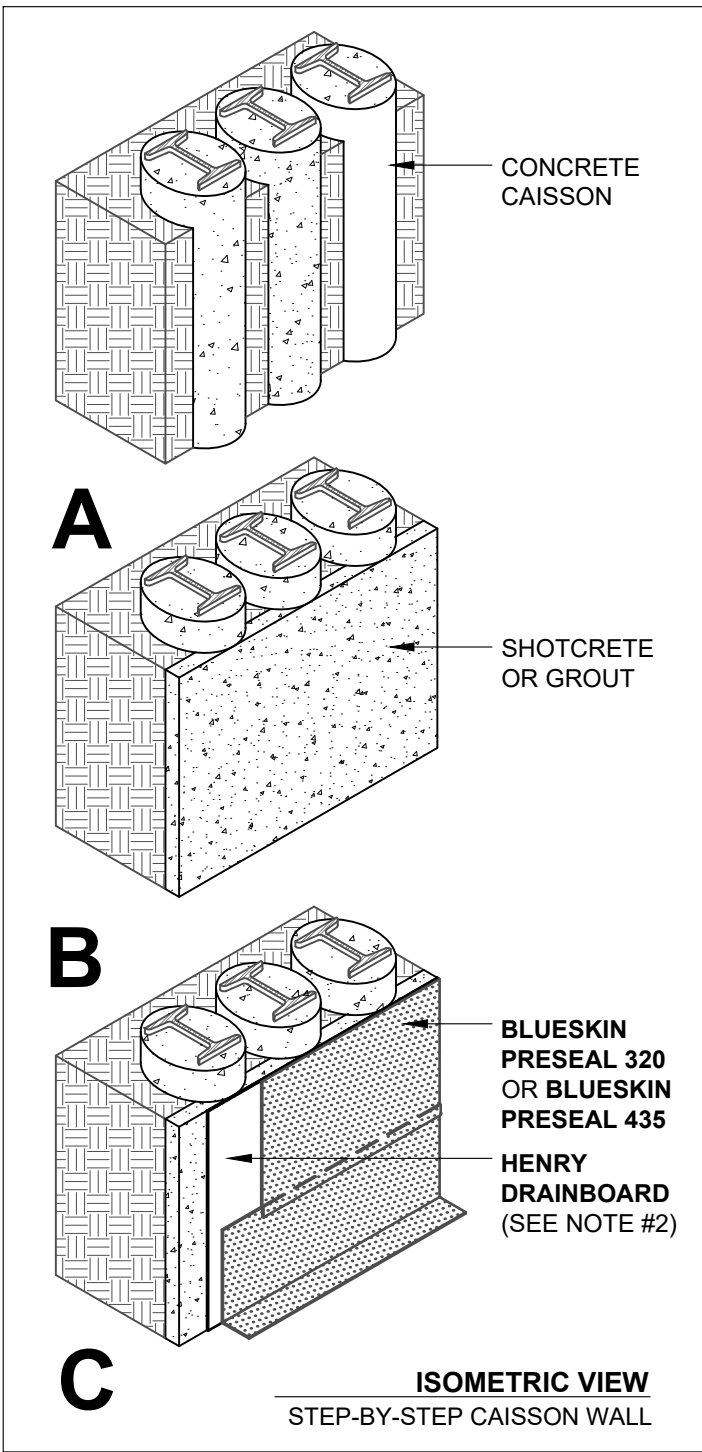


CONCRETE CAISSON
 SHOTCRETE OR GROUT
 HENRY DRAINBOARD
 (SEE NOTE #2)
 BLUESKIN PRESEAL 320
 OR BLUESKIN PRESEAL 435

PLAN VIEW
 CUT THROUGH CAISSON WALL



CONCRETE CAISSON

A

SHOTCRETE OR GROUT

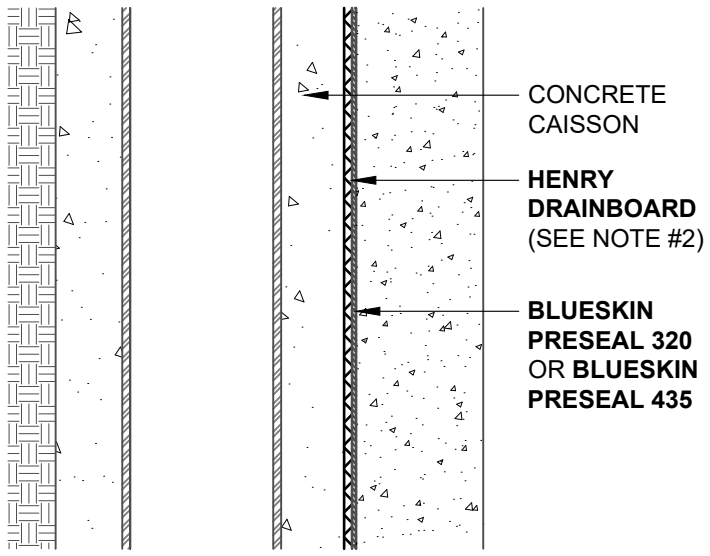
B

BLUESKIN PRESEAL 320
 OR BLUESKIN PRESEAL 435

HENRY DRAINBOARD
 (SEE NOTE #2)

C

ISOMETRIC VIEW
 STEP-BY-STEP CAISSON WALL



CONCRETE CAISSON
 HENRY DRAINBOARD
 (SEE NOTE #2)
 BLUESKIN PRESEAL 320
 OR BLUESKIN PRESEAL 435

SECTION VIEW
 CUT THROUGH CAISSON WALL

NOTES:

1. DETAIL SHOWS HENRY PRE-APPLIED WATERPROOFING SYSTEM FOR APPLICATIONS USING HENRY **BLUESKIN PRESEAL 320** OR **BLUESKIN PRESEAL 435**. SUBSTRATE SHOWN IS FOR REFERENCE ONLY.
2. HENRY RECOMMENDS THE USE OF A DRAINBOARD IN NON-HYDROSTATIC CONDITIONS, OR AS A SUBSTRATE PREPARATION.
3. REFER TO PRODUCT SPECIFIC TECHNICAL DATA SHEET (TDS) AND GUIDE SPECIFICATION FOR INSTALLATION PROCEDURES.



MANUFACTURER GUIDE DETAILS ARE FOR REFERENCE ONLY. HENRY DOES NOT ASSUME RESPONSIBILITY FOR ERRORS OR DEVIATIONS IN DESIGN OR ENGINEERING. PROJECT SPECIFIC VERIFICATION IS RECOMMENDED PRIOR TO INSTALLATION.

HENRY PRE-APPLIED WATERPROOFING SYSTEM

CONCRETE CAISSON WALLS

BLUESKIN PRESEAL 320 OR BLUESKIN PRESEAL 435
 CONCRETE CAISSON PRIOR TO CAST-IN-PLACE WALL

SCALE: N.T.S. 09-14-2022

BSPS-0E1