

**NO TERMINATION BAR**

N.T.S

**AIR-BLOC ALL WEATHER STPE**

**BLUESKIN SA**

SET FLASHING ONTO A BED OF WET **HENRY 925 BES SEALANT** (60 MILS) AT FLEXIBLE FLASHING OVERLAP

**MODIFIEDPLUS G100S/S OR PROTECTION FABRIC - GR08**

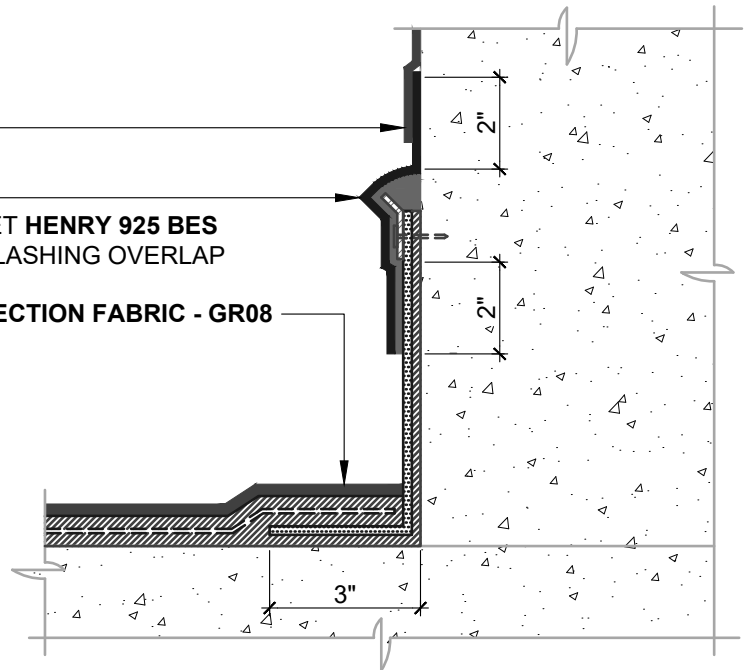
**HENRY CM100** (60 MILS)

**POLYESTER FABRIC**

**HENRY CM100** (60 MILS)

**HENRY 990-25**

**HENRY CM100** (60 MILS)



**TERMINATION BAR**

N.T.S

**NOTES:**

1. DETAIL SHOWS **AIR-BLOC ALL WEATHER STPE FLUID APPLIED VAPOR PERMEABLE AIR BARRIER** AND **HENRY CM100 COLD FLUID-APPLIED WATERPROOFING** TRANSITION. SUBSTRATE SHOWN IS FOR REFERENCE ONLY. REFER TO PRODUCT SPECIFIC TECHNICAL DATA SHEET (TDS) FOR PRODUCT SPECIFIC ACCEPTABLE SUBSTRATES.
2. SECURE FLASHING WITH TERMINATION BAR WHEN INSTALLED AT 12" OR GREATER ABOVE DECK.
3. REFER TO PRODUCT SPECIFIC TECHNICAL DATA SHEET (TDS), GUIDE SPECIFICATION AND INSTALLATION MANUAL FOR INSTALLATION PROCEDURES.

**Henry**<sup>®</sup>

999 N. Pacific Coast Highway, Suite 800  
El Segundo, CA 90245  
800-486-1278 • www.henry.com

MANUFACTURER GUIDE DETAILS ARE FOR REFERENCE ONLY. HENRY DOES NOT ASSUME RESPONSIBILITY FOR ERRORS OR DEVIATIONS IN DESIGN OR ENGINEERING. PROJECT SPECIFIC VERIFICATION IS RECOMMENDED PRIOR TO INSTALLATION.

**AIR-BLOC ALL WEATHER STPE TIE-IN TO HENRY CM100**

**TIE-IN DETAIL**

**CONCEALED FLASHING**  
**HENRY 990-25**

SCALE: N.T.S.

05-22-2019

**ABSTPE-TID2B**