

AIR-BLOC ALL WEATHER STPE

BLUESKIN SA

SET FLASHING ONTO A BED OF WET **HENRY 925 BES SEALANT** (60 MILS) AT FLASHING OVERLAP

MODIFIEDPLUS G100S/S

HENRY 790-11/790-11EV (125 MILS)

POLYESTER FABRIC

HENRY 790-11/790-11EV (90 MILS)

NEOFLASH OR HENRY 990-25

HENRY 790-11/790-11EV (125 MILS)

PRIMER (SEE NOTE #2)

NO TERMINATION BAR

N.T.S

AIR-BLOC ALL WEATHER STPE

BLUESKIN SA

SET FLASHING ONTO A BED OF WET **HENRY 925 BES SEALANT** (60 MILS) AT FLASHING OVERLAP

MODIFIEDPLUS G100S/S

HENRY 790-11/790-11EV (125 MILS)

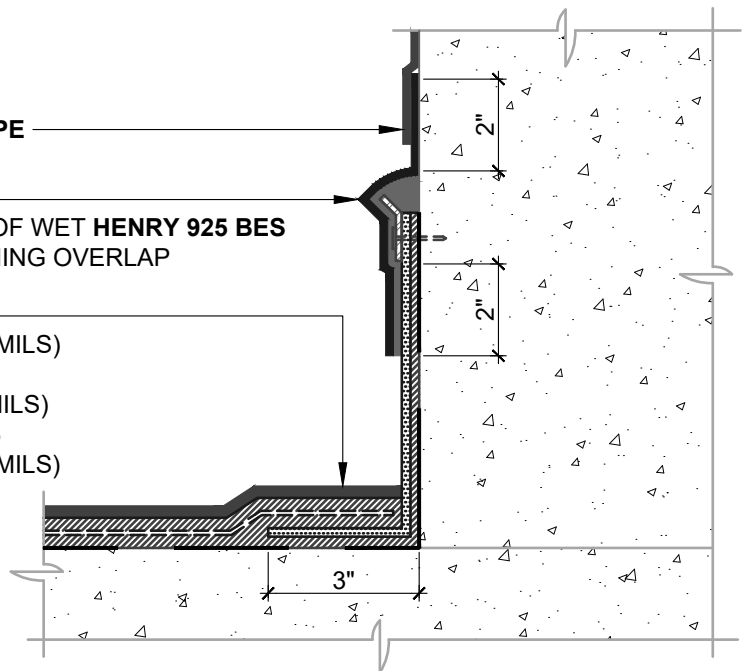
POLYESTER FABRIC

HENRY 790-11/790-11EV (90 MILS)

NEOFLASH OR HENRY 990-25

HENRY 790-11/790-11EV (125 MILS)

PRIMER (SEE NOTE #2)



TERMINATION BAR

N.T.S

NOTES:

1. DETAIL SHOWS **AIR-BLOC ALL WEATHER STPE FLUID APPLIED VAPOR PERMEABLE AIR BARRIER** AND **HENRY 790-11/790-11EV HOT RUBBERIZED ASPHALT** TRANSITION. SUBSTRATE SHOWN IS FOR REFERENCE ONLY. REFER TO PRODUCT SPECIFIC TECHNICAL DATA SHEET (TDS) FOR PRODUCT SPECIFIC ACCEPTABLE SUBSTRATES.
2. RECOMMENDED ADHESIVE/PRIMER FOR **HENRY 790-11/790-11EV**: **HENRY 910-01 ASPHALT PRIMER** OR **HENRY 930-18 POLYMER MODIFIED ADHESIVE**. REFER TO PRODUCT SPECIFIC TECHNICAL DATA SHEET TO CONFIRM VOC COMPLIANCE.
3. SECURE FLASHING WITH TERMINATION BAR WHEN INSTALLED AT 12" OR GREATER ABOVE DECK.
4. REFER TO PRODUCT SPECIFIC TECHNICAL DATA SHEET (TDS), GUIDE SPECIFICATION AND INSTALLATION MANUAL FOR INSTALLATION PROCEDURES.

Henry[®]

999 N. Pacific Coast Highway, Suite 800
El Segundo, CA 90245
800-486-1278 • www.henry.com

MANUFACTURER GUIDE DETAILS ARE FOR REFERENCE ONLY. HENRY DOES NOT ASSUME RESPONSIBILITY FOR ERRORS OR DEVIATIONS IN DESIGN OR ENGINEERING. PROJECT SPECIFIC VERIFICATION IS RECOMMENDED PRIOR TO INSTALLATION.

AIR-BLOC ALL WEATHER STPE TIE-IN TO HENRY 790-11/790-11EV

TIE-IN DETAIL

CONCEALED FLASHING
NEOFLASH OR HENRY 990-25

SCALE: N.T.S.

05-22-2019

ABSTPE-TID1B