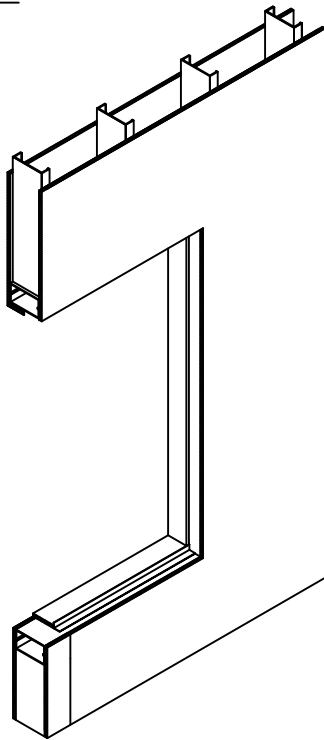
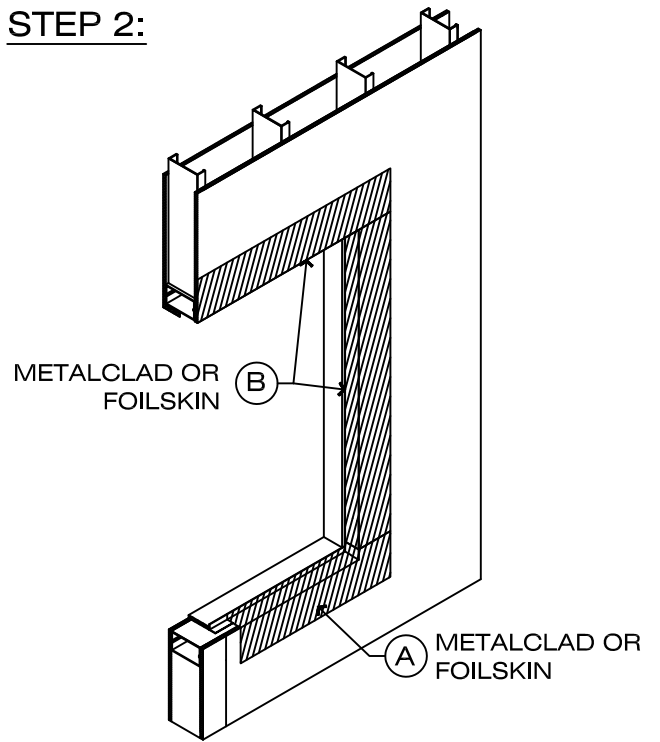


STEP 1:



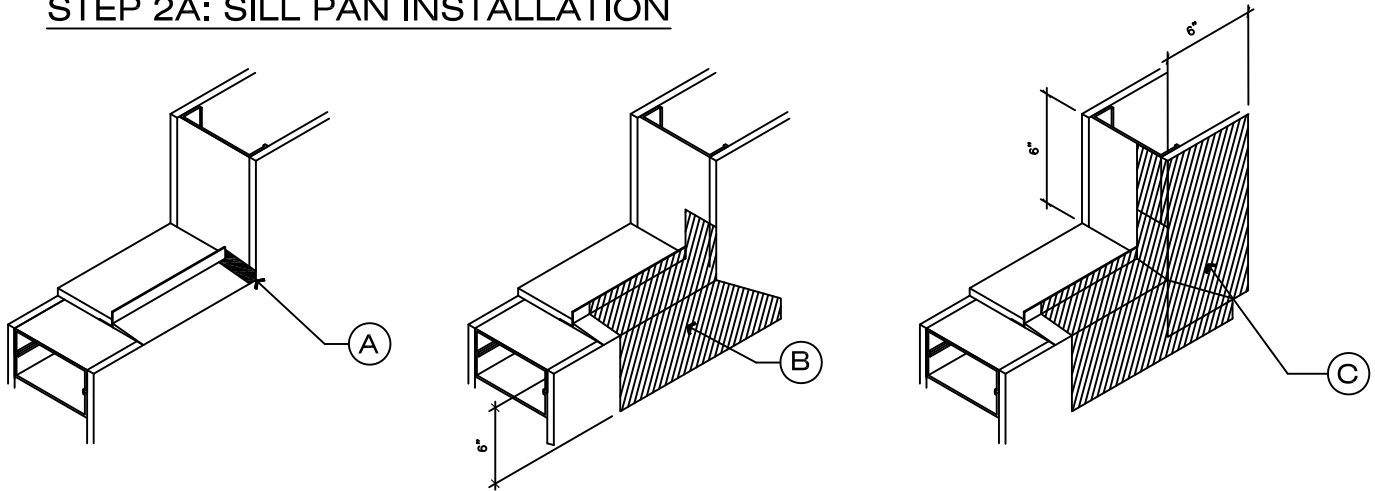
INSTALL METAL ANGLE ONTO SLOPED SILL.

STEP 2:



- A. INSTALL METALCLAD/FOILSKIN OVER METAL ANGLE, SLOPED SILL, AND ONTO SHEATHING
- B. INSTALL METALCLAD/FOILSKIN AT ROUGH OPENING AT THE HEAD AND JAMBS

STEP 2A: SILL PAN INSTALLATION



(A) APPLY HE925 SEALANT AT SILL-TO-JAMB INTERFACE AS SHOWN. IMMEDIATELY PROCEED TO STEP B.

(B) BEFORE HE925 SEALANT CURES, APPLY METALCLAD/FOILSKIN ON VERTICAL LEG OF METAL ANGLE AND EXTEND 3" ONTO SHEATHING

(C) EXTEND BLUESKIN SA 6" UP JAMB OVER METALCLAD/FOILSKIN STRIP AT CORNER TO CREATE SILL PAN



VAPOR PERMEABLE AIR-BLOC 33MR MEMBRANE

SCALE: N.T.S.

STEEL STUD / FLANGED WINDOW INSTALLATION

FIT TO PAPER

SEQUENCE
DETAIL

AB-H124A