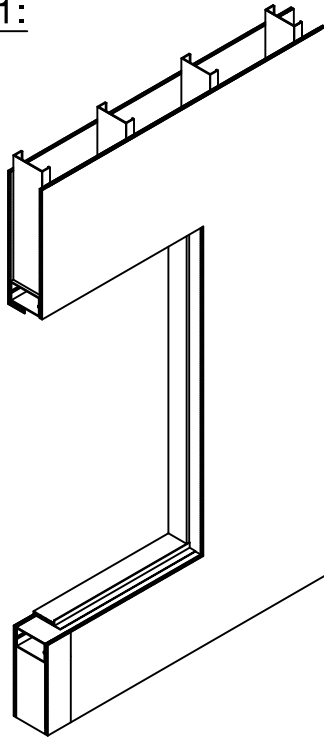
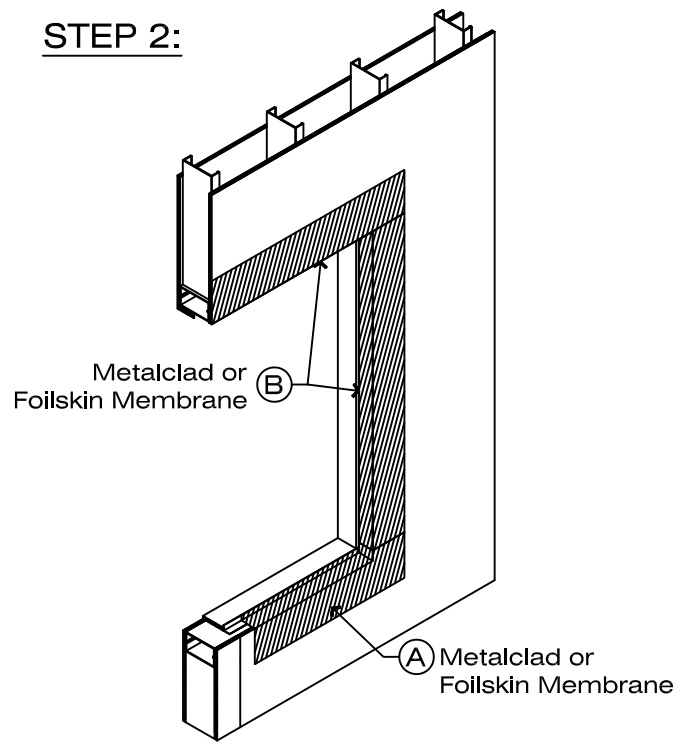


STEP 1:



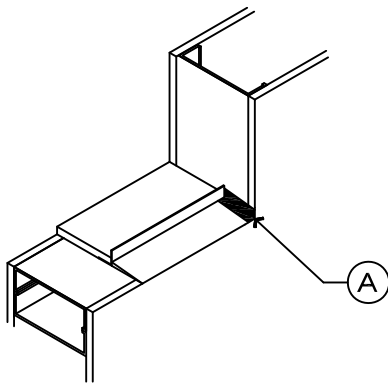
INSTALL METAL ANGLE ONTO SLOPED SILL AND AT JAMBS AND HEAD AS REQUIRED BY WINDOW MANUFACTURER.

STEP 2:

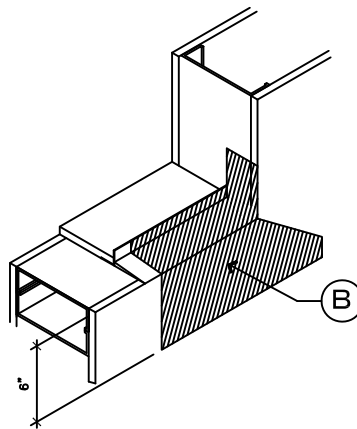


- A. INSTALL METALCLAD OR FOILSKIN OVER METAL ANGLE, SLOPED SILL, AND ONTO SHEATHING. SEE BELOW.
- B. INSTALL METALCLAD OR FOILSKIN AT ROUGH OPENING AT THE HEAD AND JAMBS

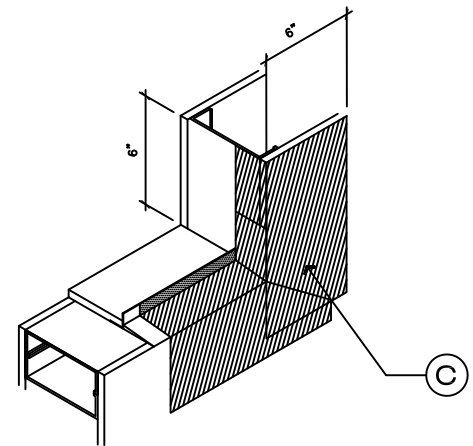
STEP 2A: SILL PAN INSTALLATION



(A) APPLY HE925 SEALANT AT SILL-TO-JAMB INTERFACE AS SHOWN. IMMEDIATELY PROCEED TO STEP B.



(B) BEFORE HE925 SEALANT CURES, APPLY METALCLAD/FOILSKIN ON VERTICAL LEG OF METAL ANGLE AND EXTEND 3" ONTO SHEATHING



(C) EXTEND METALCLAD/FOILSKIN 6" UP JAMB OVER METALCLAD/FOILSKIN STRIP AT CORNER TO CREATE SILL PAN



VAPOR PERMEABLE AIR-BLOC MEMBRANE

SCALE: N.T.S.

STEEL STUD / REBATE WINDOW INSTALLATION

10-09-13

**SEQUENCE
DETAIL**

AB-H123A