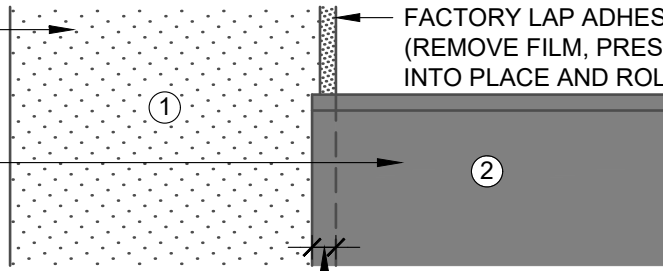


**BLUESKIN PRESEAL 435**  
OR **BLUESKIN PRESEAL 320**



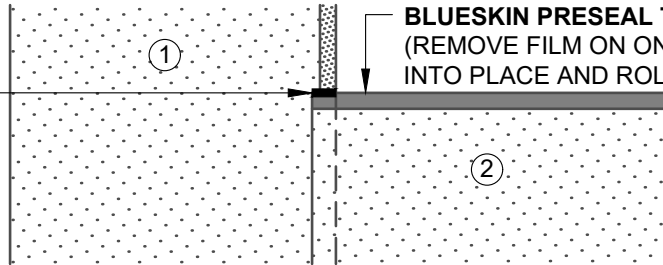
**FACTORY LAP ADHESIVE**  
(REMOVE FILM, PRESS OVERLAPPING MEMBRANE INTO PLACE AND ROLL SEAM WITH STEEL ROLLER)

**BLUESKIN PRESEAL 435**  
OR **BLUESKIN PRESEAL 320**

OVERLAP 2" (50MM)

### 1 PRE-APPLIED WATERPROOFING FACTORY LAP ADHESIVE SEAM

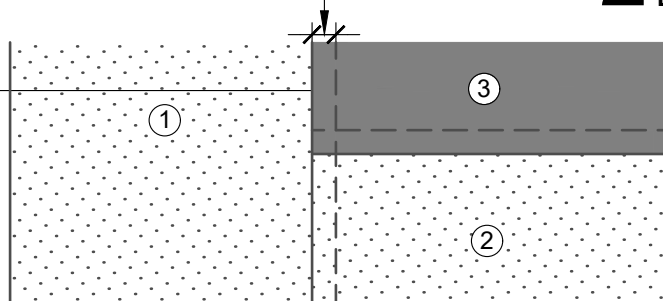
SEAL EDGE OF **BLUESKIN PRESEAL TAPE 50S** AT FACTORY ADHESIVE SEAM WITH 1/8" (3MM) BEAD OF **HENRY 925 BES SEALANT**



OVERLAP 2" (50MM)

### 2 PRE-APPLIED WATERPROOFING DOUBLE SIDED TAPE SEAM

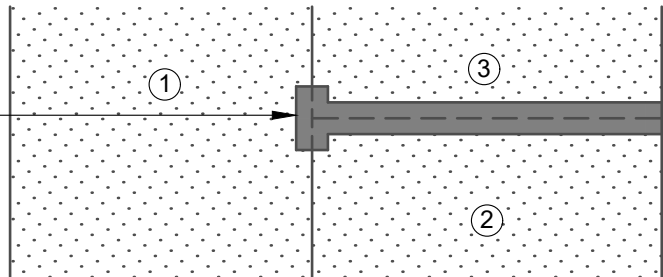
**BLUESKIN PRESEAL 435**  
OR **BLUESKIN PRESEAL 320**  
(REMOVE **BLUESKIN PRESEAL TAPE 50S** FILM, PRESS OVERLAPPING MEMBRANE INTO PLACE AND ROLL SEAM WITH STEEL ROLLER)



OVERLAP 2" (50MM)

### 3 PRE-APPLIED WATERPROOFING T-LAP SEAM

SEAL SEAMS WITH **BLUESKIN PRESEAL TAPE 120V** (CENTER TAPE OVER PRE-APPLIED WATERPROOFING SEAM)



### 4 TAPE PRE-APPLIED WATERPROOFING SEAMS

#### NOTES:

1. DETAIL SHOWS HENRY PRE-APPLIED WATERPROOFING SYSTEM FOR APPLICATIONS USING HENRY **BLUESKIN PRESEAL 320** OR **BLUESKIN PRESEAL 435**. SUBSTRATE SHOWN IS FOR REFERENCE ONLY.
2. REFER TO PRODUCT SPECIFIC TECHNICAL DATA SHEET (TDS) AND GUIDE SPECIFICATION FOR INSTALLATION PROCEDURES.

MANUFACTURER GUIDE DETAILS ARE FOR REFERENCE ONLY. HENRY DOES NOT ASSUME RESPONSIBILITY FOR ERRORS OR DEVIATIONS IN DESIGN OR ENGINEERING. PROJECT SPECIFIC VERIFICATION IS RECOMMENDED PRIOR TO INSTALLATION.

#### HENRY PRE-APPLIED WATERPROOFING SYSTEM

**MEMBRANE SEAM OVERLAP**  
**BLUESKIN PRESEAL 320 OR BLUESKIN PRESEAL 435**  
**T-LAP AT WATERPROOFING MEMBRANE SEAMS**

SCALE: N.T.S.

09-14-2022

**BSPS-3C**

**Henry**  
A **CARLISLE** COMPANY